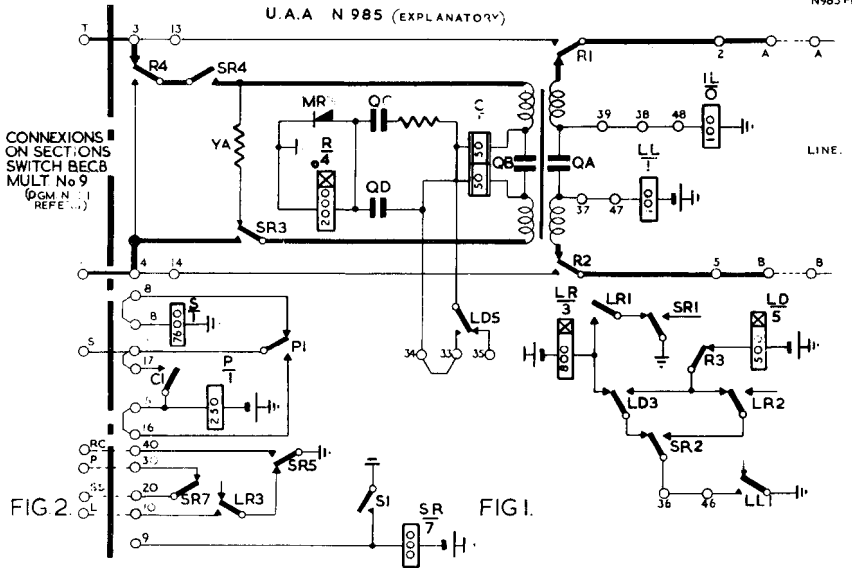


# TERMINATION OF PRIVATE CIRCUIT.

N754

SECTIONS SWITCH BOARD MULT No 9  
 SIGNALLING GROUP B: LOOP IN G/A/C

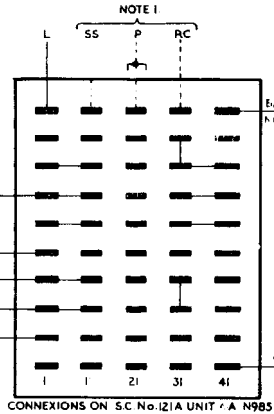
ISSUE A  
 SUPERSEDES FOR NEW WORK  
 N985 FIG 4(b)



- NOTES -
- 1 SEE N751 FOR CONNEXIONS ON SECTIONS SWITCH BOARD MULT No 9.
  2. N705 SHOWS SIGNALLING RESISTANCE LIMITS FOR VARIOUS VOLTAGES.
  3. FUSING VIA THE FUSES (S1) MOUNTED IN SWITCHBOARD ONE FUSE PER FOUR CIRCUITS.
  4. BATTERY TO TAG TO S.C. No. 121A TO BE WRENCH VIA A SPARE NIGHT SERVICE KEY SPINDLING SET.

ADDITIONAL EQUIPMENT TO BE POSITIONED SEPARATELY

1L - COIL RETARD No. 3419  
 LL - RELAY No. 5675.



POED  
 S. BCH.

PAPER:-W

CIRCULATION:-  
 GENERAL

A	NEW FORMAT WITH REVISIONS	SR	20-4-66
	R.A. MARCHANT S 3		5-3-56