

TERMINATION OF INTERSWITCHBOARD PRIVATE CCT. N724.

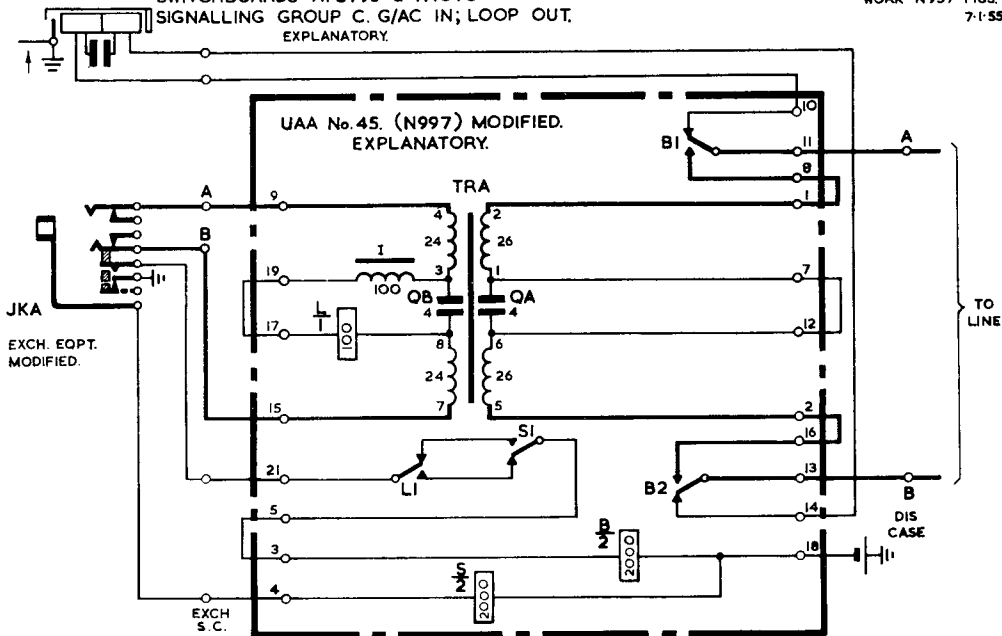
2 PANELS -1

SUPERSEDES FOR NEW
WORK N957 FIGS. 1 & 2.

7-1-55

SWITCHBOARDS AT 3796 & N1070
SIGNALLING GROUP C. G/AC IN; LOOP OUT.
EXPLANATORY.

CIRCULATION	GENERAL.
SUFFIX	
REDAWN MINOR AMENDMENT.	18.9.62 B
MINOR AMENDMENT	13.9.57 A
Amend.	
PAPER	W.



N724

2 PANELS - 2

NOTE.

- SIGNALLING RESISTANCE LIMIT DETERMINED BY DISTANT EQUIPMENT.
- THE JACK JKA IS PART OF JACK No. 710 BO ON 65 LINE SWBDS, OR PART OF JACK No. 810 BN ON 180 LINE SWBDS.
- THE JKA AUXILIARY SPRING NUMBERS DEPEND ON TYPE OF JACK THUS:-

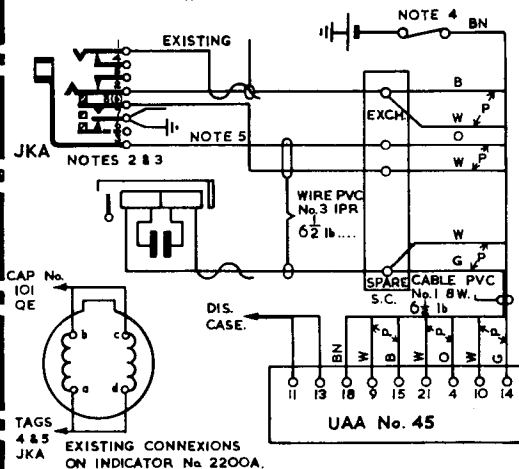
AUXILIARY SPRING	JACK No.710 BO	JACK No.810 BN
MAKE	6	8
FIXED	7	7
BREAK	-	6

- BATTERY SUPPLY TO UAA. TO BE MADE VIA A FUSE No.44A/I MOUNTED IN A SPARE FUSE POSITION.
- WHERE OMISSION OF EXCHANGE PROHIBITION HAS BEEN AUTHORISED, OMIT CONNEXION JKA (3) TO EXCH. S.C.
- A LABEL WHITE No.398A, MARKED MOD TO DGM. N724 TO BE FIRMLY ATTACHED TO U.A.A.

WIRING SCHEDULE

RECOVER	SHIFT	PROVIDE
WIRES FROM DIS CASE AND S.C. OF SELECTED EXCH LINE TERMINATION	WIRE (6) FROM JKA (3) TO JKA (7)	WIRES FROM SPARE TAGS ON EXCH. S.C. TO INDICATOR TAGS (a) & (d), JKA (3) NOTE 5 & JKA (8) NOTE 3.
WIRES FROM JKA (4) & (5) TO INDICATOR (a) & (d) AT BOTH ENDS.	WIRE ON L _e (CONNECTED TO S _e) TO B _e .	CABLE FROM EXCH. S.C. & FUSE TO U.A.A. CABLE FROM U.A.A. TO DIS CASE. STRAPS ON U.A.A. TERMINALS AS SHOWN IN TABLE.

WIRING DETAILS



STRAPS ON UAA No. 45.

1 - 8	7 - 12
2 - 16	17 - 19
3 - 5	