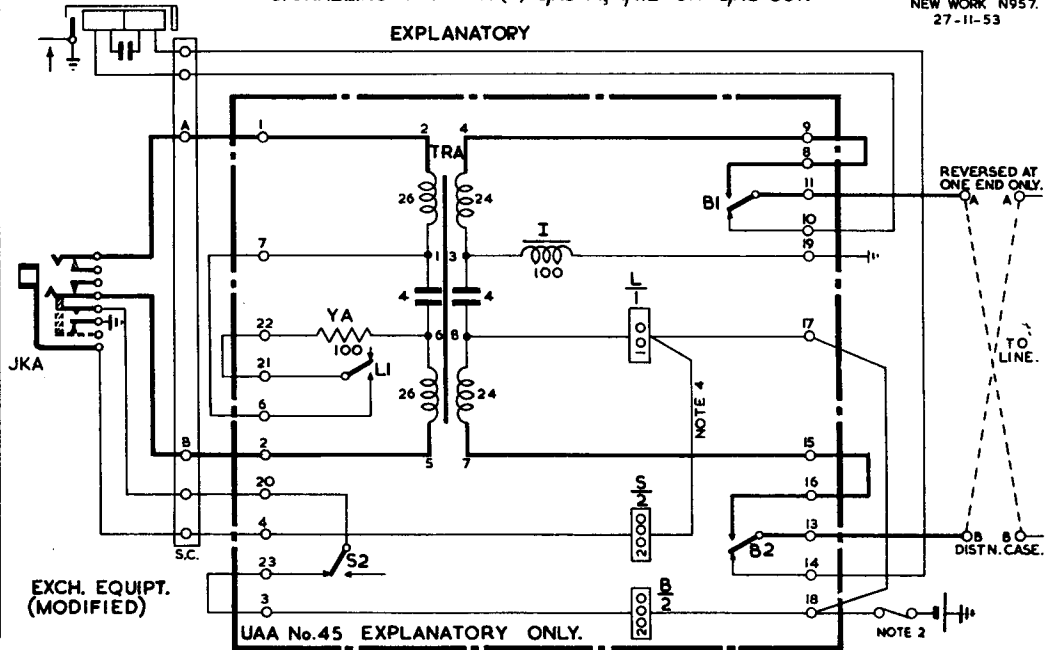


TERMINATION FOR INTERSWITCHBOARD PRIVATE CIRCUIT  
 AT SWITCHBOARD N1070 & SWITCHBOARD AT3796  
 SIGNALLING GROUP A (ii) G/AC IN; A/WE OR G/AC OUT.

N723  
 2 PANELS-1  
 SUPERSEDES FOR  
 NEW WORK N957.  
 27-11-53

GENERAL  
 18.9.52 B  
 12.10.55 A  
 MINOR AMENDMENTS  
 NOTE AMENDED  
 Amendt.  
 W  
 PAPER

EXPLANATORY



N723

2 PANELS - 2.

NOTES:-

1. THIS CIRCUIT TO BE USED ONLY WHERE LOCAL CONDITIONS NECESSITATE GENERATOR CALL IN. NORMALLY, FOR INTERSWITCHBOARD PRIVATE CIRCUITS, WHEN A/WE SIGNALLING IS POSSIBLE TERMINATE TO SIGNALLING GROUP A (1).
2. BATTERY CONNEXIONS TO U.A.A. No. 45 TO BE MADE VIA A FUSE No. 44A/1 FITTED ON SPARE FUSE MOUNTING IN SWITCHBOARD, FUSE TO SUPPLY 1 TO 4 UNITS, BUT SEE NOTE 4.
3. SEE N705 TABLE 1 FOR SIGNALLING RESISTANCE LIMITS WITH VARIOUS VOLTAGES.
4. WHERE SIGNALLING REQUIREMENTS DEMAND, VOLTAGE OF THE SIGNALLING BATTERY MAY BE INCREASED BY PROVIDING ADDITIONAL CELLS IN PLACE OF STRAP BETWEEN TERMS 17 & 18. AND BY SHIFTING WIRE S<sub>a</sub>-L<sub>a</sub> TO S<sub>e</sub>-B<sub>e</sub> IN UNIT. THE ADDITIONAL CELLS MAY BE COMMON TO 1 TO 4 UNITS WITH COMMON FUSE.
5. CONNECT TERMINAL 19 TO EARTH AND TERMINAL 18 TO BATTERY (SEE NOTES 2 & 4)
6. USE WIRE P.V.C. No.3 1PR/6½... AND CABLE P.V.C. No.3 -6W/6½...
7. JACK JKA WILL BE JACK No. 710B0 IN 65 LINE SWBDS. AND AUX. SPRINGS WILL BE NUMBERED 7 & 8 AS SHOWN OR JACK No. 810 BN IN 180 LINE SWBDS, AND AUX. SPRINGS WILL BE NUMBERED 7 & 6.

WIRING INSTRUCTIONS

DISCONNECT

- (1) WIRES TO 'a' AND 'd' ON INDICATOR No. 2200A INSULATE WITH PAPER OR PLASTIC SLEEVING TIE BACK INTO FORM.

SHIFT

- (1) BOTH WIRES FROM SLEEVE OF JACK TO AUXILIARY SPRING (7).

PROVIDE (NOTE 6)

- (1) SWITCHBOARD WIRING FROM 'a' & 'd' OF INDICATOR AUXILIARY MAKE SPRING AND SLEEVE OF JACK TO SPARE TAGS ON STRIP CONNEXION (EXCH) IN SWITCHBOARD.
- (2) CABLE FROM THESE TAGS TO U.A.A. 45 TERMS 10, 14, 20 AND 4 RESPECTIVELY.
- (3) CABLE FROM DIS. CASE  
(a) A & B TO U.A.A. TERMS 1 & 2  
(b) LINE TO U.A.A. TERMS 11 & 13.

STRAPS ON U.A.A. No.45	
3 - 23	15 - 16
6 - 7	17 - 18
8 - 9	21 - 22

