

TERMINATION OF INTER-P.B.X. PRIVATE CCT.
 SWBD. CB873
 SIGNALLING GROUP H; A/BB B/W (AUTO BAL. BATT. B/W).

N719
 ISSUE A

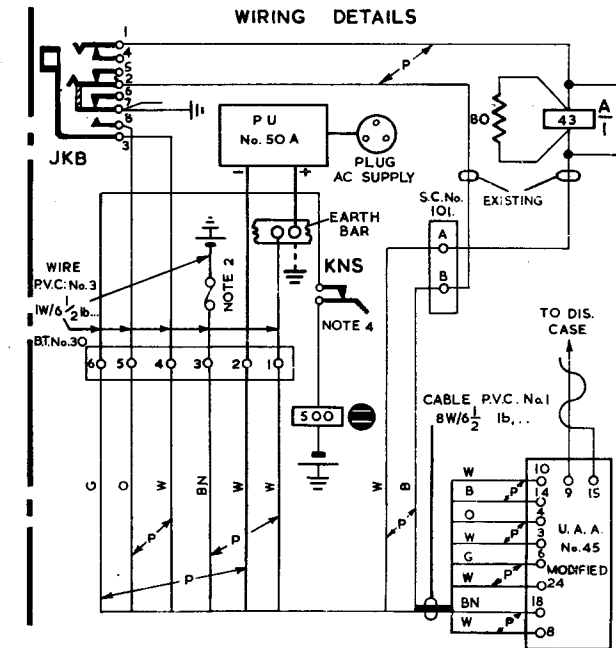
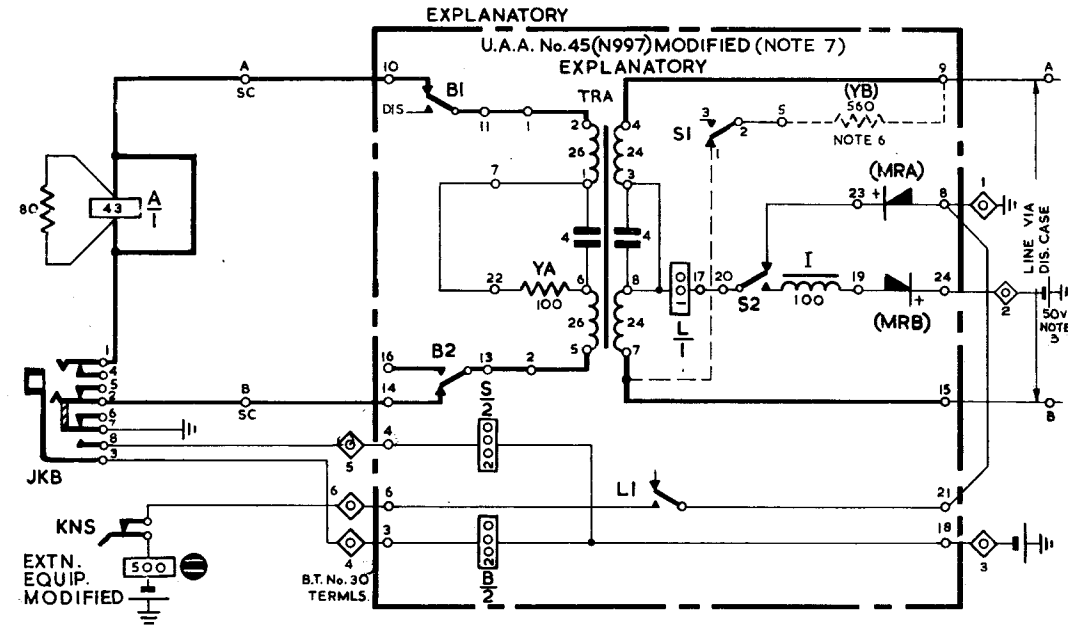
NOTES:-

1. DIAGRAM N705 TABLE 4 GIVES SIGNALLING RESISTANCE LIMITS WITH VARIOUS VOLTAGES.
2. BATTERY SUPPLY TO U.A.A. TO BE MADE VIA A FUSE No. 36/1 FITTED ON A FUSE MTG. No. 136A SCREWED TO WOODWORK ABOVE EXISTING SWITCHBOARD FUSE MTG.. FUSE TO SUPPLY ONE TO FOUR U.A.A.'S.
3. ONE POWER UNIT No. 50A TO BE PROVIDED PER INSTALLATION FOR 50V A/BB SIGNALLING PURPOSES.
4. KNS CONTACT UNIT No. HAS THE SAME No. AS SELECTED EXTN.
5. WHERE OMISSION OF EXCH. PROHIBITION HAS BEEN AUTHORISED, CONNECT AS INTER-SWITCHBOARD EXTN. (SEE DGM. N774)
6. RESISTOR YB TO BE FITTED ONLY WHERE THE INTER-SWITCHBOARD PRIVATE CIRCUIT IS AMPLIFIED.
7. A LABEL MARKED "U.A.A. MODIFIED TO DGM. N719" TO BE FIRMLY ATTACHED TO UNIT. (USE LABEL WHITE No. 398A)

WIRING SCHEDULE		
RECOVER	SHIFT	PROVIDE
STRAP JKB (2) & (6). WIRE A1 TO JKB (8). WIRE JKB (7) TO KNS BREAK SPRING (NOTE 4). WIRE FROM TML. 8 OF U.A.A. WIRE FROM TRA (3) TO I. WIRES FROM EXTN. TMLS. IN SWBD. TO DIS. CASE AT BOTH ENDS.	WIRES ON JKB (4) TO JKB (7). WIRE ON L _e (CONNECTED TO S _e) TO Be. WIRE ON I TAG (CONNECTED TO TML 19) TO OTHER TAG OF I.	B.T. No. 30 ADJACENT TO SC. No. 101 IN SWBD. STRAP ACROSS A RELAY COIL TAGS. FUSE MTG. No. 136A (SEE NOTE 2) AND WIRE FROM MAIN BATTERY CONNECTION ON SWBD. FUSE TO FUSE MTG. No. 136A. WIRE FROM B.T. No. 30 TERMINALS AS FOLLOWS:- (1) TO EARTH (SPARE) TERMINAL ON BUS BAR. (2) (3) TO FUSE MTG. 136A. (4) TO JKB (3). (5) TO JKB (8). (6) TO KNS. CABLE FROM B.T. & S.C. IN SWBD. TO U.A.A. AS SHOWN. WIRE TRA (3) TO TRA (8) CONNECT MRA BETWEEN U.A.A. TMLS. (8) & (23) WITH RED END TO (23). CONNECT MRB BETWEEN (19) & (24) WITH RED END TO (24). CONNECT RESISTOR YB BETWEEN TMLS. 5 & 9, AND WIRE S1 TO TRA (7). WHERE REQUIRED (SEE NOTE 6). CABLE FROM SELECTED EXTN. TMLS. IN DIS. CASE TO U.A.A. TMLS. (9) & (15).
WHERE REQUIRED, (SEE NOTE 6), WIRES FROM S1 SOLDER TOGETHER INSULATE & TIE BACK, WIRE FROM S3.		

SCHEDULE OF APPARATUS	
No.	COMPONENT
1-	U.A.A. No. 45.
1-	B.T. No. 30.
1-	FUSE MTG. No. 136A IF NOT EXISTING (SEE NOTE 2).
1-	FUSE No. 36/1.
2-	RECTIFIER ELEMENTS No. 232 (MRA, MRB).
1-	RESISTOR CARBON No. 15GD-560A (SEE NOTE 6).
1-	LABEL WHITE No. 398A

STRAPS IN U.A.A. No. 45
 1-11, 2-13, 7-22, 8-21, 17-20,



P.O.E.D.
 S BCH.
 PAPER: R

CIRCULATION:
 RESTRICTED

ISSUES			
A	NEW FORMAT SIG. BATT. MADE SOV.	23. 11. 66	
	E.C.C. STEVENS	53/2	1-6-65