

TERMINATION OF PRIVATE CIRCUIT

N715

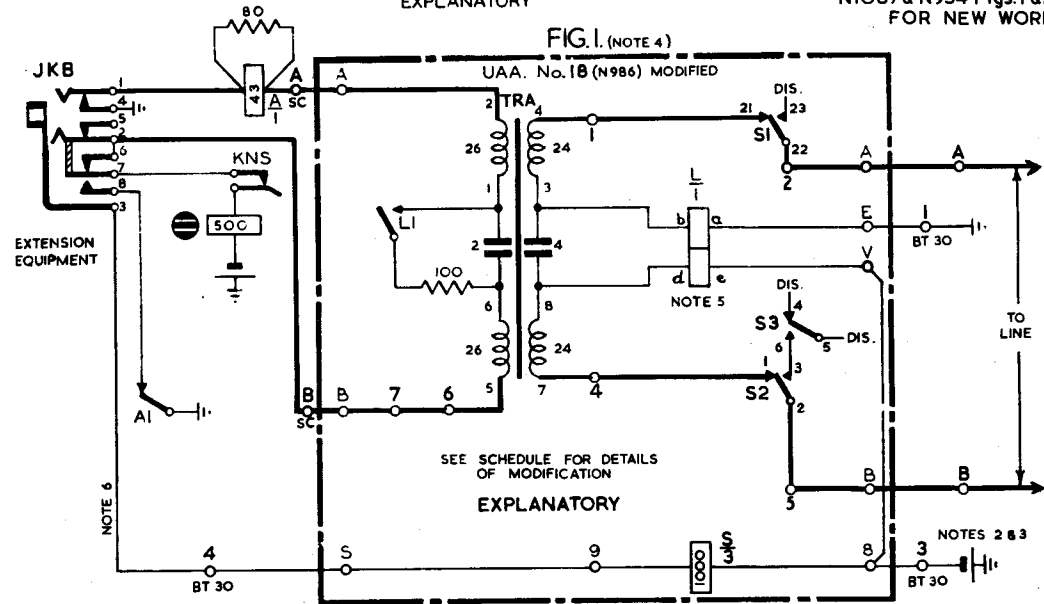
SWITCHBOARD C.B.873
SIGNALLING GROUP B: LOOP IN; G/AC OUT

ISSUE C
SUPERSEDES N1086
N1087 & N954 Figs. 1 & 2
FOR NEW WORK

NOTES :-

- DGM. N705 TABLE 2 GIVES SIGNALLING RESISTANCE LIMIT WITH VARIOUS VOLTAGES FOR FIG. 1
- BATTERY SUPPLY TO U.A.A. TO BE MADE VIA A FUSE No. 36/1, FITTED ON A FUSE MTG. No. 136A SCREWED TO THE WOODWORK ABOVE EXISTING FUSE MTG. FUSE TO SUPPLY 1 TO 4 UNITS.
- WHERE NECESSARY, ADDITIONAL CELLS (SERVING 1 TO 4 UNITS WITH COMMON FUSE, SEE NOTE 2) MAY BE CONNECTED IN PLACE OF STRAP BETWEEN B & V, BY CONNECTING V TO BT 30 (2) AND JOINING ADDITIONAL CELLS BETWEEN BT 30 (2) & (3).
- FIGS. 1 & 2 TO BE USED WHERE PRIVATE CCT. EXCEEDS THE EXTENSION LINE SIGNALLING RESISTANCE LIMIT, OTHERWISE USE FIG 3. SEE E.I. TRANSM. TELE. B 3534 FOR SWBD. EXTN. LIMITS.
- DGM. N986 GIVES DETAILS OF RELAYS TO BE USED.
- WHERE OMISSION OF EXCH. PROHIBITION HAS BEEN AUTHORISED, OMIT CONNEXION JKB(3) TO BT No. 30 (4) IF WIRED TO FIGS. 1 & 2, OR CONNECT AS NORMAL EXTN. IF WITHIN SIGNALLING LIMITS (SEE NOTE 4).
- A LABEL MARKED 'UAA MODIFIED TO DGM. N715' TO BE FIRMLY ATTACHED TO UNIT, (USE LABEL WHITE No. 398A)

EXPLANATORY

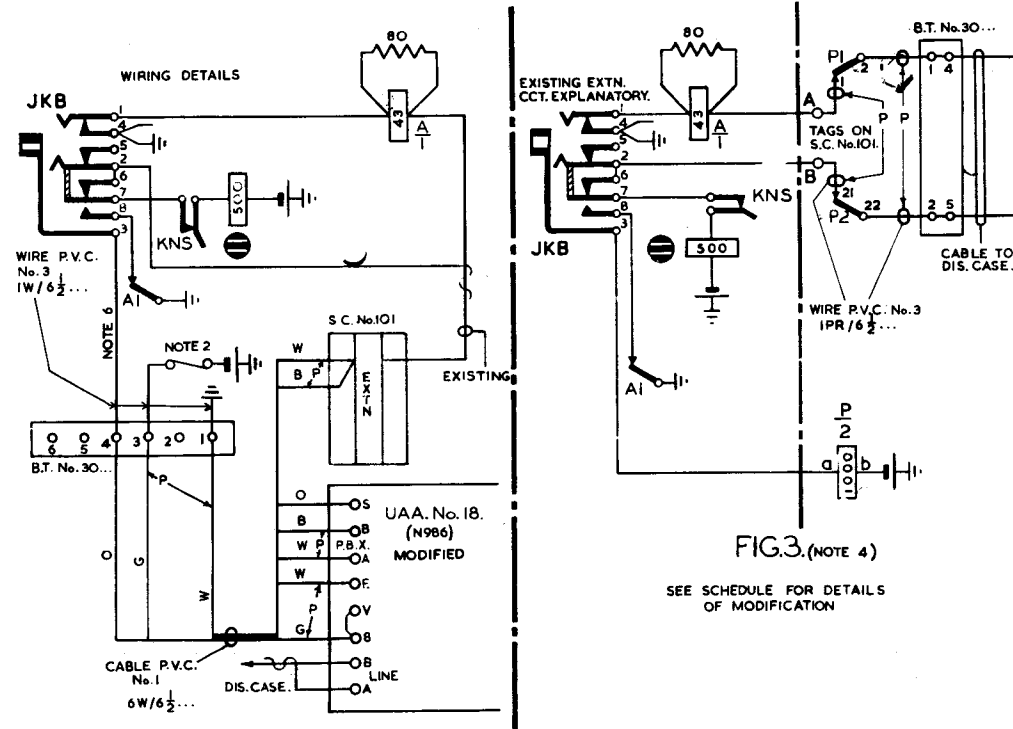


SCHEDULE FOR FIGS. 1 & 2

RECOVER	PROVIDE
WIRES FROM DIS. CASE TO S.C. No. 101 ON SELECTED EXTENSION AT BOTH ENDS. WIRES FROM 3 TO S23, 6 TO S4 & 7 TO S5 IN UAA.	WIRE FROM SLEEVE OF JACK TO B.T. No. 30... MOUNTED ADJACENT TO S.C. No. 101 IN SWITCHBOARD STRAP 6 & 7 IN UNIT. CABLE FROM S.C. & B.T. TERMINALS TO UNIT AS SHOWN. CABLE FROM A & B (LINE) IN UNIT TO DIS. CASE TAGS OF SELECTED EXTENSION.

SCHEDULE FOR FIG. 3.

RECOVER	PROVIDE
WIRES FROM DIS. CASE TO S.C. No. 101 ON SELECTED EXTENSION AT BOTH ENDS.	RELAY SO1A AND RELAY COVER AK, ON CORD CIRCUIT RELAY MOUNTING. WIRES, JACK (3) TO P RELAY (a) P RELAY (b) TO BATTERY ON SWBD. BUS BAR (SPARE) TERMINAL. A & B ON S.C. TO P1 & 21, P2 & 22 TO B.T. No. 30 (1) & (2). CABLE BT. 30 (4) & (5) TO DIS. CASE EXTN. TERMINALS.



P.O.E.D.
S BCH.
PAPER: W
CIRCULATION:
GENERAL

ISSUES			
C	NEW FORMAT	JLR	22.11.66
B	NOTES & SCHEDULE AMENDED. MINOR CORRECTIONS	G.A.A.	8.12.61
A	STRAP ADDED TO JACK, FIG. 3, PANEL 2. J.R. R.W.B.		11.6.64
	P.A. MARCHANT.	53/2	23.12.64