

TERMINATION OF INTER-P.B.X. PRIVATE CIRCUIT  
OR PRIVATE CIRCUIT SWITCHBOARD CB.873  
SIGNALLING GROUP C : G/AC IN ; LOOP OUT.

N714  
ISSUE B

NOTES:-

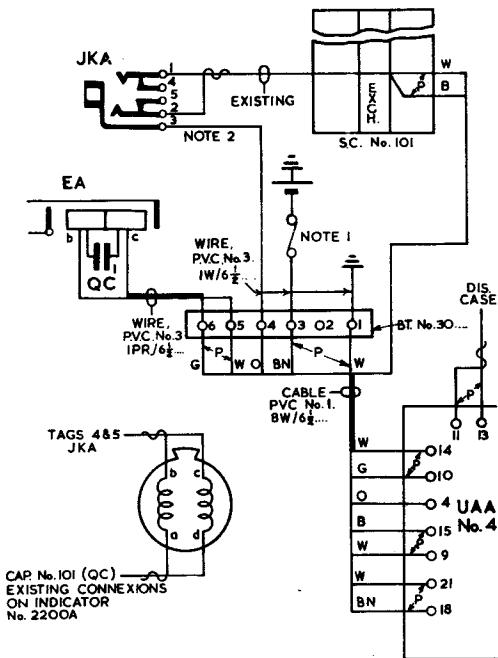
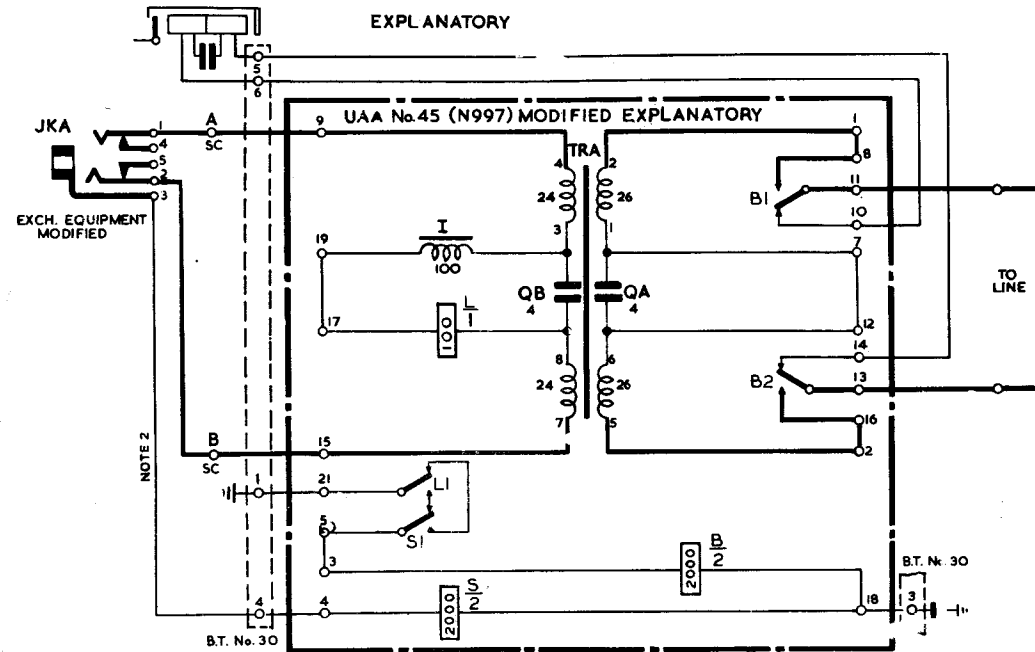
1. BATTERY SUPPLY TO U.A.A. TO BE MADE VIA A FUSE No. 36/1, FITTED IN A FUSE MOUNTING No.136A SCREWED TO WOODWORK ABOVE EXISTING FUSE MTG.. FUSE TO SUPPLY 1 TO 4 UNITS.

2. WHERE OMISSION OF EXCH. PROHIBITION HAS BEEN AUTHORISED OMIT CONNEXION JKA (3) TO BT. No. 30 (4)

3. A LABEL MARKED "UAA MODIFIED TO DGM. N714" TO BE FIRMLY ATTACHED TO UNIT. (USE LABEL WHITE No.398A)

| RECOVER   | PROVIDE  |
|---|--|
| WIRES FROM INNER SPRINGS OF JKA TO 'b' & 'c' OF INDICATOR No. 2200A. INSULATE & TIE BACK INTO FORM.   | BT. No. 30 ADJACENT TO SC No. 101. IN SWBD.                        |
| WIRES FROM TAG 3 OF JKA SOLDER & SLEEVE THE WIRES WIRE TO '+' OF S RELAY COIL IN U.A.A. WIRES FROM DIS. CASE TO S.C. No. 101 ON SELECTED EXCH. TERMN. AT BOTH ENDS. | FUSE MOUNTING No.136A(SEE NOTE 1)                                  |
|   | WIRE FROM MAIN BATTERY CONNECTION ON SWBD, FUSE TO FUSE MTG. 136A. |
|   | WIRE FROM BT. 30 (1) TO SWBD ETH. (SPARE) TERML.                   |
|   | "    "    "    (3) TO FUSE   |
|   | "    "    "    (4) TO JACK (3)                                     |
|   | "    "    "    (5) TO INDICATOR (b&c)                              |
|   | WIRE FROM S RELAY (e) TO U.A.A. TERMINAL 18                        |
|   | CABLE FROM SC & BT TO U.A.A. AS SHOWN                              |
|   | CABLE FROM U.A.A. (108)(13) TO DIS. CASE EXCH. TERMINALS.          |

| STRAPS ON UAA No. 45 |         |
|----------------------|---------|
| 1 - 8                | 7 - 12  |
| 2 - 16               | 17 - 19 |
| 3 - 5                |         |



P.O.E.D.  
S BCH.

PAPER: R

CIRCULATION:  
RESTRICTED

| ISSUES |                               |        |            |
|--------|-------------------------------|--------|------------|
| B      | NEW FORMAT. MADE RED          | J.L.R. | 23. 11. 66 |
| A      | NOTES ADDED. MINOR AMENDMENTS | G.A.A. | 8. 12. 61  |
|        | P.A. MARCHANT                 | S3/2   | 21-10-55   |