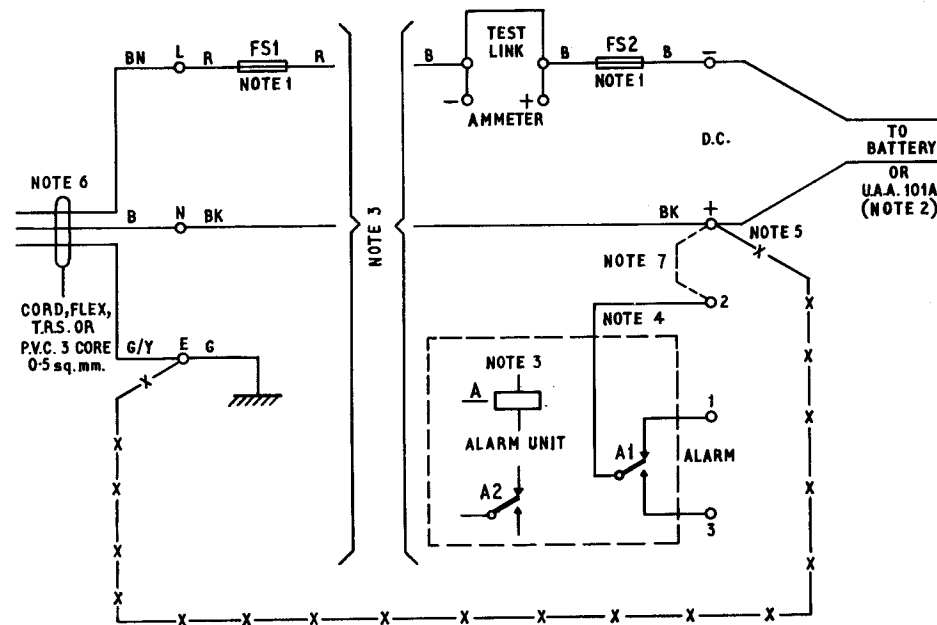


RECTIFIER No.140/...

NOTES:—

1. Rectifier 140/1.5 — FS1—Fuse No.36A/1.  
Rectifier 140/5 — FS1—Fuse No.36A/3.  
FS2—Fuse No.36A/... Value and position in the circuit will be chosen by the manufacturer. Refer to Paste-in Diagram
2. Feed to P.A.B.X. to be taken from the Battery. Feed to P.M.B.X. 2/...to be taken from U.A.A. No.101A (N677).
3. For internal connexions reference should be made to the Paste in Diagram
4. Relay normally operated. Contact shown unoperated.
5. One side of the output (normally +) should be connected to the Telephone Signalling Earth with Wire, Earthing 9141 or 9142. The Mains Protective Earth must not be utilised for the Telephone Signalling Earth. Either an entirely independent connexion to a separate earth e.g. an additional spike, shall be on a direct connexion made to the Consumers Earth Terminal provided by the Electricity Board. The two earths shall be connected together at the Terminal Block of the Rectifier by an insulated conductor similar to that used for the Mains Protective Earth connexion. See wiring shown thus —x—x—x—
6. Plug to suit Subscriber's Socket Outlet and Cord, Flex...to be requisitioned separately.
7. When Rectifier is used at P.A.B.X.'s the Alarm Lead should be taken from Terminal 1 with Terminal 2 strapped to the positive side of the output.



P.O. TELECOMMS. HQRS.	ISSUE		
PAPER :-W			
CIRCULATION:- GENERAL		<i>Camilleri</i>	TDI. 2. 3. 13-9-72