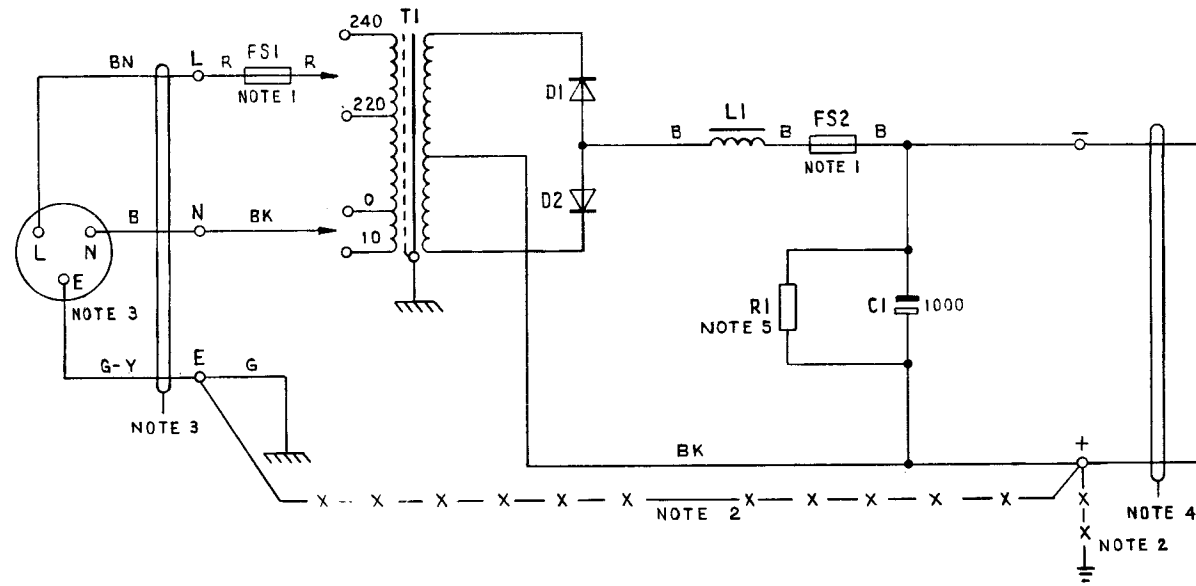


POWER-UNIT No 86B
50V, 275mA D.C. SUPPLY FROM 50HZ MAINS

N689
ISSUE A
SUPERSEDES N687

NOTES:-

1. FS1 :- FUSE No. 36A/0.1 FS2 :- FUSE No. 36/0.5
2. ONE SIDE OF THE OUTPUT (NORMALLY +) SHOULD BE CONNECTED, WITH WIRE, EARTHING 9141 OR 9142, TO THE TELEPHONE SIGNALLING EARTH, WHICH MUST BE PROVIDED USING ONE OF THE METHODS SHOWN IN TI A2 E1006. THE MAINS PROTECTIVE EARTH MUST NOT BE UTILISED FOR THE TELEPHONE SIGNALLING EARTH. THESE TWO EARTHS MUST BE CONNECTED TOGETHER AT THE TERMINAL BLOCK OF THE POWER-UNIT WITH WIRE, EARTHING 9141 OR 9142. SEE WIRING SHOWN THUS -X-X-.
3. CORD, FLEXIBLE 3183 Y 1.5mm², AND B.S.3 PIN PLUG TO SUIT SOCKET TO BE REQUISITIONED SEPARATELY AND FITTED LOCALLY. FUSED PLUGS SHALL BE FITTED WITH 3AMP FUSES.
4. OUTPUT CABLING :- SEE APPROPRIATE INSTALLATION DIAGRAM OR INSTRUCTION
5. VALUE CHOSEN BY MANUFACTURER



P. O TELECOMMS HQRS			
PAPER :- W	ISSUE	A	NEW FORMAT. TRANSFORMER 200V. TAPPING REMOVED. WIRE COLOURS CHANGED. CAPACITOR VALUE ADDED. NOTES AMENDED DLW TD 7.2.3
DISTN :- GENERAL			J. S. GORE
			31-1-77
			20-5-68