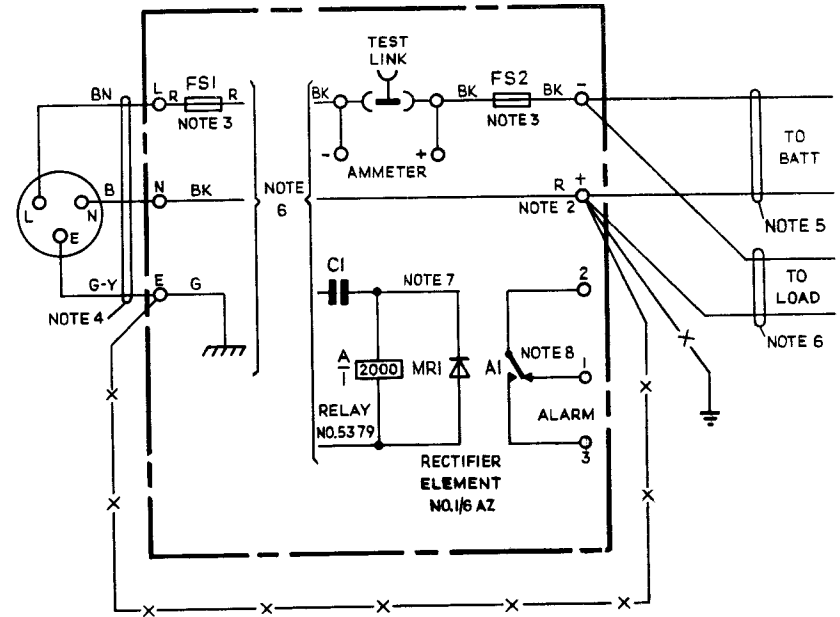


# RECTIFIER NO. 105A (NOMINAL OUTPUT 2A AT 12V)

N 686  
ISSUE C

**NOTES.**

1. THE RECTIFIER NO.105A WAS DESIGNED FOR USE WITH THE AMPLIFIER AND LOUDSPEAKER NO.4 FOR WHICH PURPOSE THE OUTPUT SHOULD NOT BE EARTHED.
2. IF THE OUTPUT REQUIRES TO BE EARTHED WHEN THE RECTIFIER IS USED FOR OTHER PURPOSES, THE MAINS PROTECTIVE EARTH MUST NOT BE UTILIZED. AN ENTIRELY INDEPENDENT CONNEXION (NORMALLY +) TO THE TELEPHONE SIGNALLING EARTH, eg. AN ADDITIONAL EARTH SPIKE, MUST BE PROVIDED USING WIRE EARTHING 9141 OR 9142. THESE TWO EARTHS SHALL BE CONNECTED TOGETHER AT THE TERMINAL BLOCK OF THE RECTIFIER BY AN INSULATED CONDUCTOR SIMILAR TO THAT USED FOR THE MAINS PROTECTIVE EARTH - SEE WIRING SHOWN THUS -X-X-X-
3. FS1 - FUSE NO.36A/0.5, FS2 - FUSE NO.36/3.
4. PLUG TO SUIT SUBSCRIBERS SOCKET OUTLET AND CORD FLEXIBLE P.V.C. 3 CORE 3183 0.5mm DIA.
5. CABLE DIST 3595B/4W BUNCHED TO FORM A PAIR.
6. FOR INTERNAL CONNEXIONS, REFERENCE SHOULD BE MADE TO THE PASTED-IN DIAGRAM.
7. ALARM RELAY AND RECTIFIER ARE TYPICALLY SHOWN - SEE PASTED-IN DIAGRAM FOR PARTICULAR ARRANGEMENT.
8. CONTACT SHOWN WITH RELAY UNOPERATED.



P.D. TELECOMMS HQRS.			
PAPER:- W	ISSUE	C	NEW FORMAT OPB-1-1 <i>Broasfield 1/15/77</i> 4-3-77
		B	EARTH WIRE SPECIFIED K.M.A. 7-3-68
DISTN:- GENERAL			