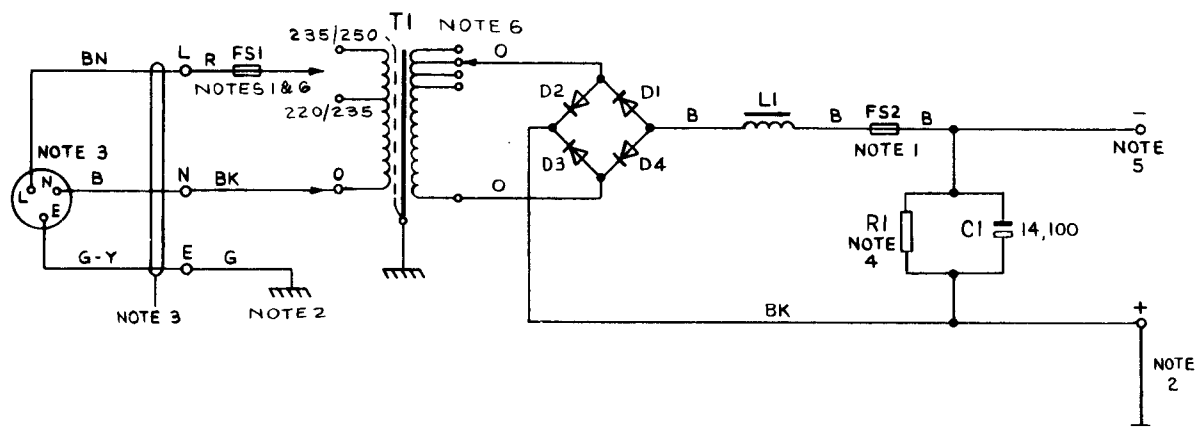


POWER-UNIT No.78A  
50V 12-0A DC SUPPLY FROM 50Hz AC MAINS

N685  
ISSUE C

NOTES:—

- 1 FSI-FUSE No.80A/5.0  
FS2-FUSE No.57/15
- 2 ONE SIDE OF THE OUTPUT (NORMALLY +) SHOULD BE CONNECTED, WITH WIRE, EARTHING 9141 OR 9142, TO THE TELEPHONE SIGNALLING EARTH, WHICH MUST BE PROVIDED USING ONE OF THE METHODS SHOWN IN TI A2 E1006. SEE ALSO SPECIFICATION D1921. THE MAINS PROTECTIVE EARTH MUST NOT BE UTILISED FOR THE TELEPHONE SIGNALLING EARTH. THE MAINS PROTECTIVE EARTH SHALL BE CONNECTED TO THE EARTH CONNECTING BLOCK OF THE POWER-UNIT WITH 1.5 mm<sup>2</sup> CONDUCTOR.
- 3 CORD, FLEXIBLE 3183 Y 1.5mm<sup>2</sup> AND PLUG No.103 TO BE REQUISITIONED SEPARATELY AND FITTED LOCALLY. PLUGS SHALL BE FITTED WITH 13 AMP FUSES.
- 4 VALUE CHOSEN BY MANUFACTURER.
- 5 OUTPUT CABLING—WHEN USED WITH PMBX No.4 SEE RELEVANT INSTALLATIONS.
- 6 EARLIER VERSIONS OF THE POWER-UNIT MANUFACTURED BEFORE 1983 SHOW DIFFERENT PRIMARY TAPPINGS ON T1. FUSE No.80A/... (FS1) WAS FUSE No.36A/...



BRITISH TELECOMMS HQRS PAPER :- W	ISSUE		
	C	NOTE 6 ADDED. NOTES 1, 2 & 3 AMENDED. MINOR AMENDMENTS. <i>AS 44</i> RAS SE 212	19-12-83
	B	TRANSFORMER 200V TAPPING REMOVED. CAPACITOR VALUE AND WIRE COLOURS CHANGED. NOTES 2 & 3 AMENDED. <i>B</i> D.L.W.TD 7.2.3	12.4.77
DISTN :- GENERAL	A	EARTH WIRE SPECIFIED K.M.A.	8-11-67