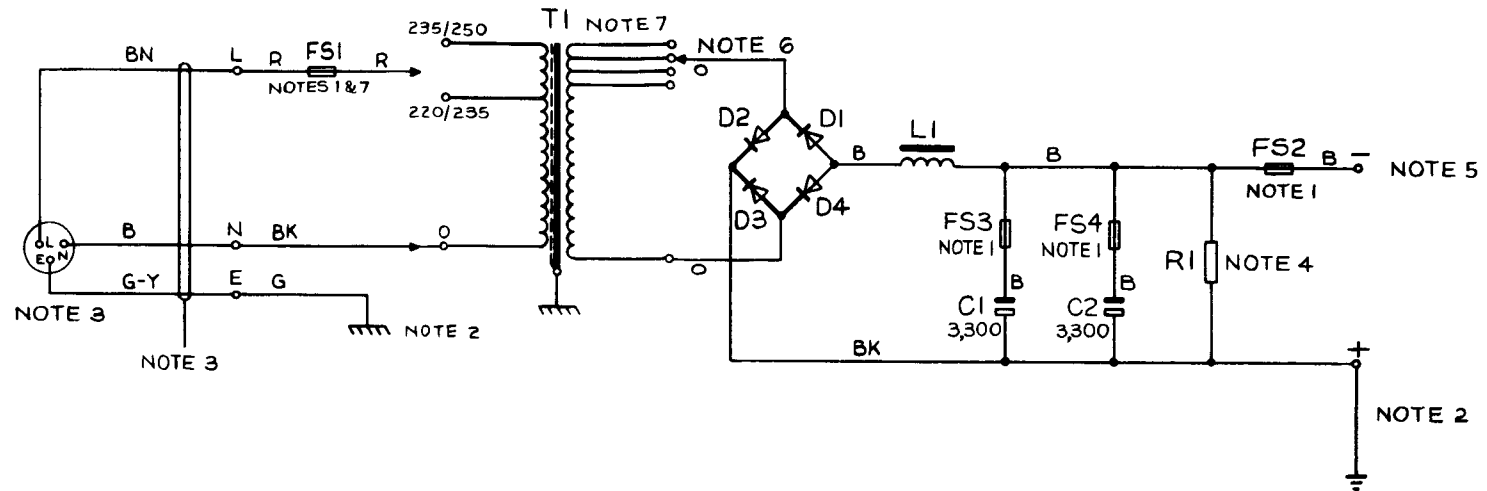


POWER-UNIT No.77A  
50V. 8·0A D.C. SUPPLY FROM 50 Hz A.C. MAINS

N684  
ISSUE C



NOTES:—

- 1 FS1 FUSE No. 80A/3·0. FS2 FUSE No. 36B/8. FS3 FUSE No. 36A/5. FS4 FUSE No. 36A/5.
- 2 ONE SIDE OF THE OUTPUT (NORMALLY +) SHOULD BE CONNECTED WITH WIRE EARTHING 9141 OR 9142, TO THE TELEPHONE SIGNALLING EARTH, WHICH MUST BE PROVIDED USING ONE OF THE METHODS SHOWN IN TI A2 E1006. SEE ALSO SPECIFICATION DI921. THE MAINS PROTECTIVE EARTH MUST NOT BE UTILISED FOR THE TELEPHONE SIGNALLING EARTH. THE MAINS PROTECTIVE EARTH SHALL BE CONNECTED TO THE EARTH CONNECTING BLOCK OF THE POWER-UNIT WITH 1·5 mm<sup>2</sup> CONDUCTOR.
- 3 CORD, FLEXIBLE 3183 Y 1·5 mm<sup>2</sup> AND PLUG No.103 TO BE REQUISITIONED SEPARATELY AND FITTED LOCALLY. PLUGS SHALL BE FITTED WITH 13 AMP FUSES.
- 4 VALUE CHOSEN BY MANUFACTURER.
- 5 OUTPUT CABLING WHEN USED WITH P.M.B.X.No.4—SEE RELEVANT INSTALLATION INSTRUCTIONS.
- 6 THESE TAPS ARE SET BY THE MANUFACTURER AND SHOULD NOT NORMALLY NEED TO BE DISTURBED.
- 7 EARLIER VERSIONS OF THE POWER-UNIT MANUFACTURED BEFORE 1983 SHOW DIFFERENT PRIMARY TAPPINGS ON TI. FUSE No. 80A/... (FS1) WAS FUSE No. 36A/.

BRITISH TELECOMMS HQRS	ISSUE	C	NOTE 7 ADDED. NOTES 1, 2 & 3 AMENDED. MINOR AMENDMENTS. <i>18. 8/77</i> RAS SE 2·1·2	19-12-83
		B	REDRAWN. TRANSFORMER 200V TAPPING REMOVED. WIRE COLOURS, OUTPUT FUSING AND CAPACITOR VALUE CHANGED. NOTES 1, 2 & 3 AMENDED. E.M.S. <i>B</i> D.L.W. TD 7·2·3	2·5·77
		A	EARTH WIRE SPECIFIED. K.M.A.	8-11-67

PAPER:- W

DISTN:-  
GENERAL