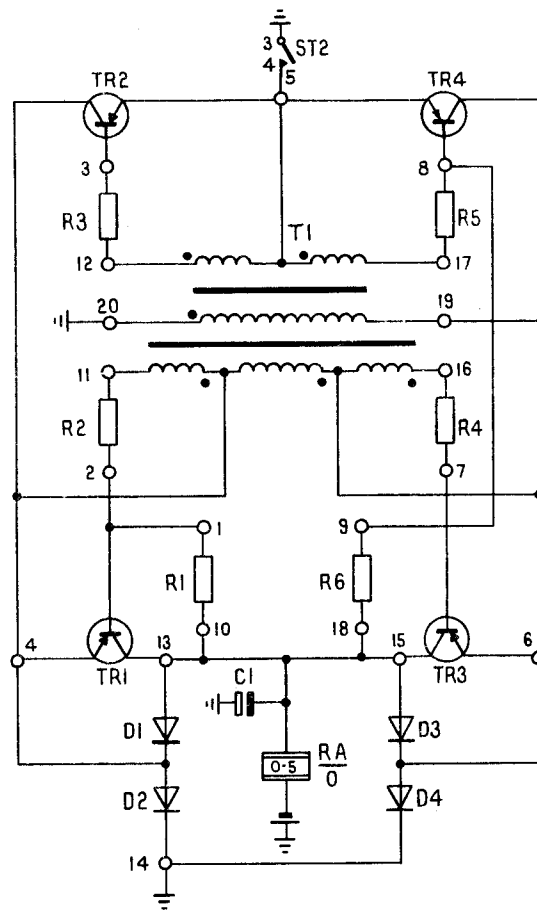
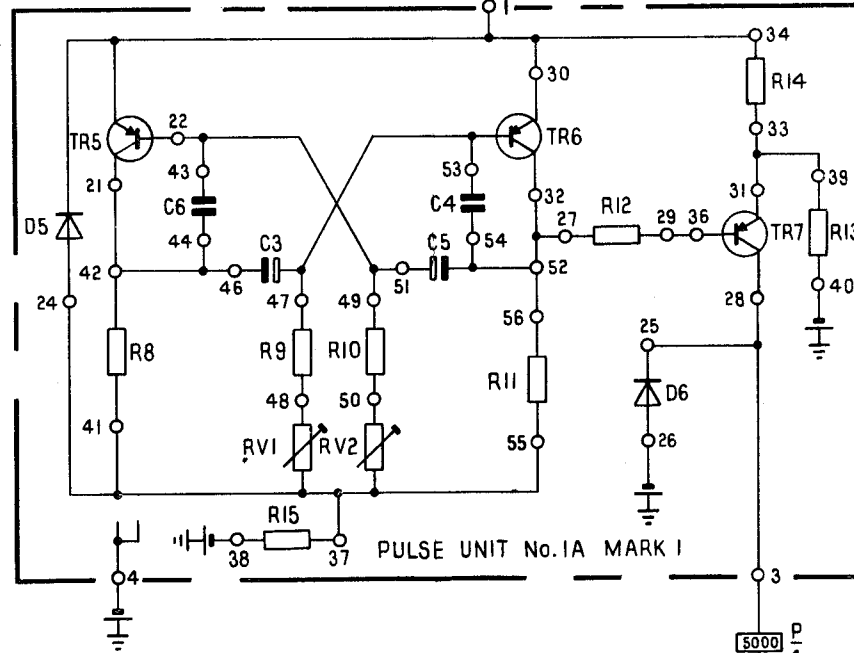
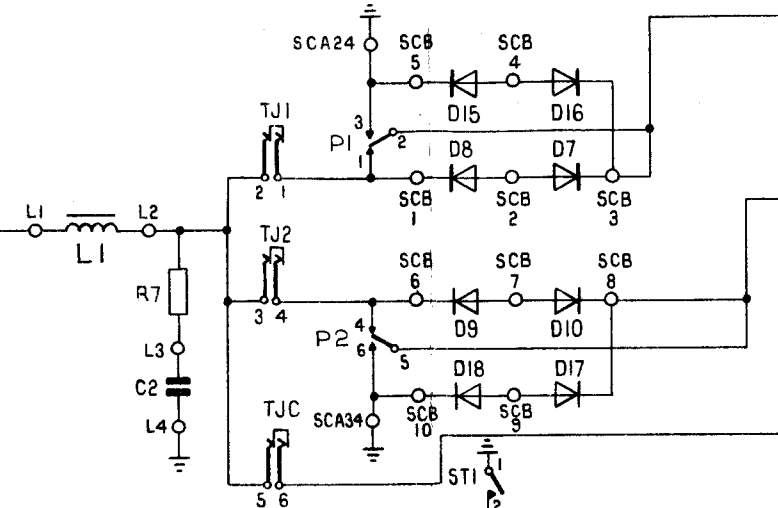


CONVERTER RINGING No. IIA(MARK I) FIG. 1

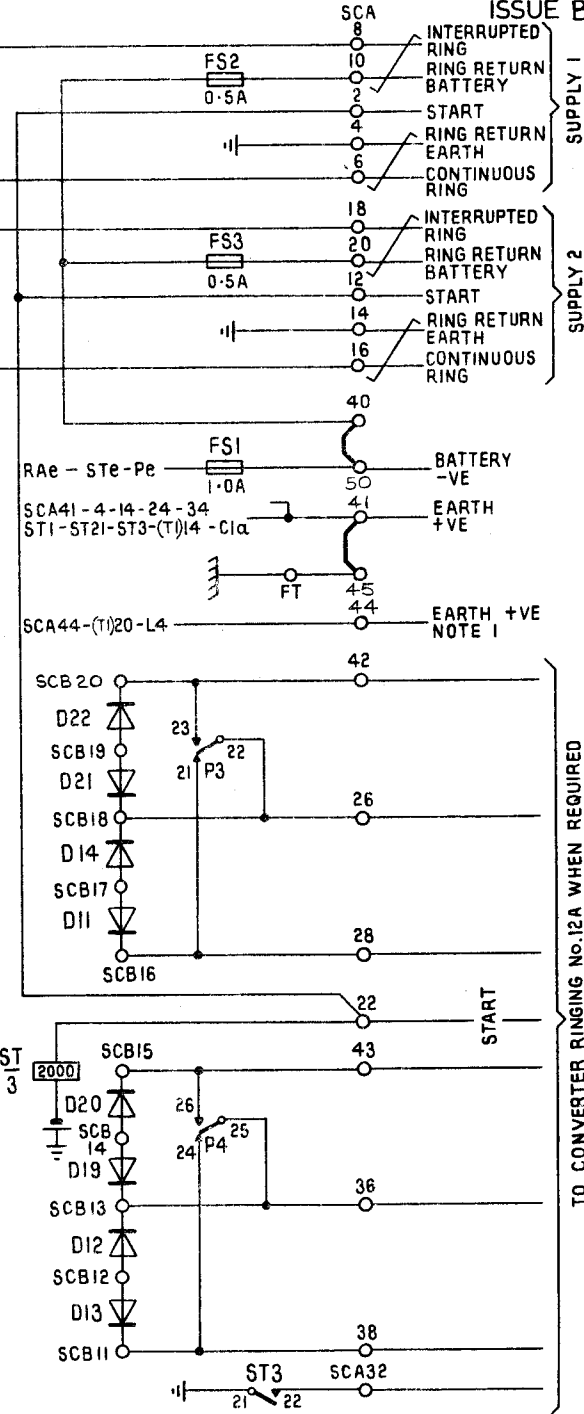
N682
PAGE 1-2
ISSUE B



NOTE :-
1. THIS LEAD MUST BE A DIRECT
FEED FROM THE FUSE - UNIT



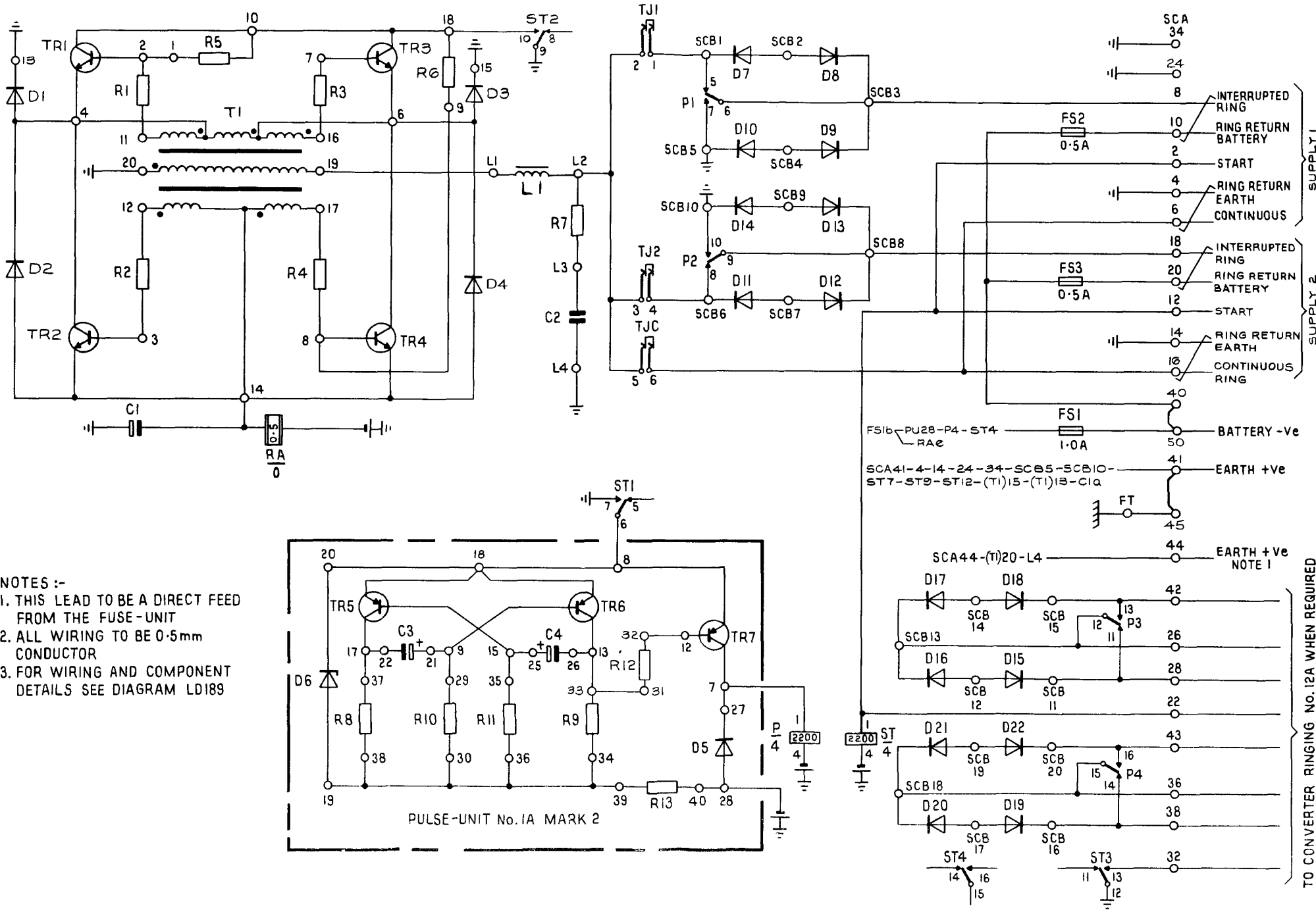
PULSE UNIT No. 1A MARK I



TO CONVERTER RINGING No. 12A WHEN REQUIRED

P0 TELECOMMS HQRS			
PAPER: W			
DISTN:-			
GENERAL			
ISSUES	B	WIRE COLOURS REMOVED. TI WAS TD. <i>ESW D.L.W.</i>	4.1.79
	A	MARK 2 INTRODUCED. FIG.1 PAGE 1 SHOWS MARK 1 AND FIG.2 PAGE 2 SHOWS MARK 2 <i>D.L.W. TD 7.2.3</i>	9.12.77
		KMA J. GORE S2/4	10.5.66

CONVERTER RINGING No.11A MARK 2
FIG.2



- NOTES :-
- 1. THIS LEAD TO BE A DIRECT FEED FROM THE FUSE-UNIT
 - 2. ALL WIRING TO BE 0.5mm CONDUCTOR
 - 3. FOR WIRING AND COMPONENT DETAILS SEE DIAGRAM LD189

TO CONVERTER RINGING No. 12A WHEN REQUIRED