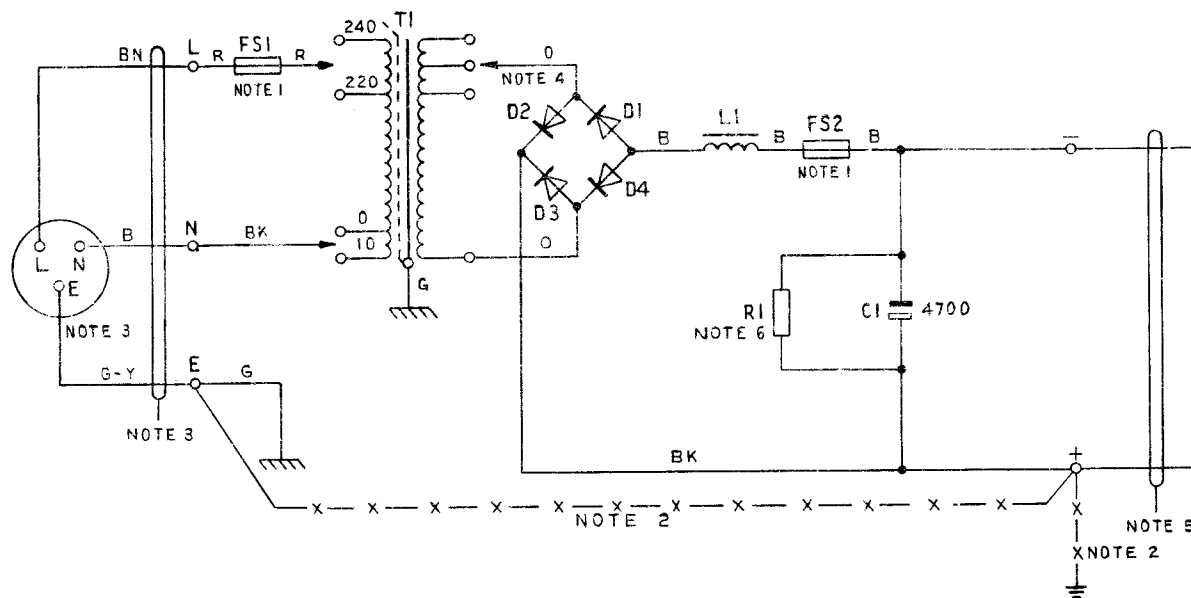


POWER-UNIT No.73A
12V 1-0AMP D.C. SUPPLY FROM 50Hz A.C. MAINS

N674
ISSUE C

NOTES:-

1. FS1:- FUSE No. 36A/0.2 FS2:- FUSE No. 36A/1
2. THE POWER-UNIT No.73A WAS DESIGNED FOR USE WITH THE AMPLIFIER AND LOUDSPEAKER No.4 FOR WHICH PURPOSE THE OUTPUT SHOULD NOT BE EARTHED. IF THE OUTPUT REQUIRES TO BE EARTHED WHEN THE POWER-UNIT IS USED FOR OTHER PURPOSES ONE SIDE OF THE OUTPUT (NORMALLY +) SHOULD BE CONNECTED, WITH WIRE, EARTHING 9141 OR 9142, TO THE TELEPHONE SIGNALLING EARTH, WHICH MUST BE PROVIDED USING ONE OF THE METHODS SHOWN IN TI A2 E1006. THE MAINS PROTECTIVE EARTH MUST NOT BE UTILISED FOR THE TELEPHONE SIGNALLING EARTH. THESE TWO EARTHS MUST BE CONNECTED TOGETHER AT THE TERMINAL BLOCK OF THE POWER-UNIT WITH WIRE, EARTHING 9141 OR 9142. SEE WIRING SHOWN THUS - X - X - X -
3. CORD, FLEXIBLE 3133 Y 1.5mm², AND B.S.3 PIN PLUG TO SUIT SOCKET TO BE REQUISITIONED SEPARATELY AND FITTED LOCALLY. FUSED PLUGS SHALL BE FITTED WITH 3 AMP FUSES.
4. THESE TAPS ARE SET BY THE MANUFACTURER AND SHOULD NOT NORMALLY NEED TO BE ADJUSTED
5. OUTPUT CABLING:- SEE APPROPRIATE INSTALLATION DIAGRAM OR INSTRUCTION
6. VALUE CHOSEN BY MANUFACTURER



P. O TELECOMMS HQRS			
PAPER :- W	ISSUE	C	NEW FORMAT TRANSFORMER 200V TAPPING REMOVED. WIRE COLOURS & CAPACITOR VALUE CHANGED. NOTES AMENDED DLW TD 7-2-3 31-1-77
DISTN :- GENERAL		B	EARTH WIRE SPECIFIED KMA 7-3-68