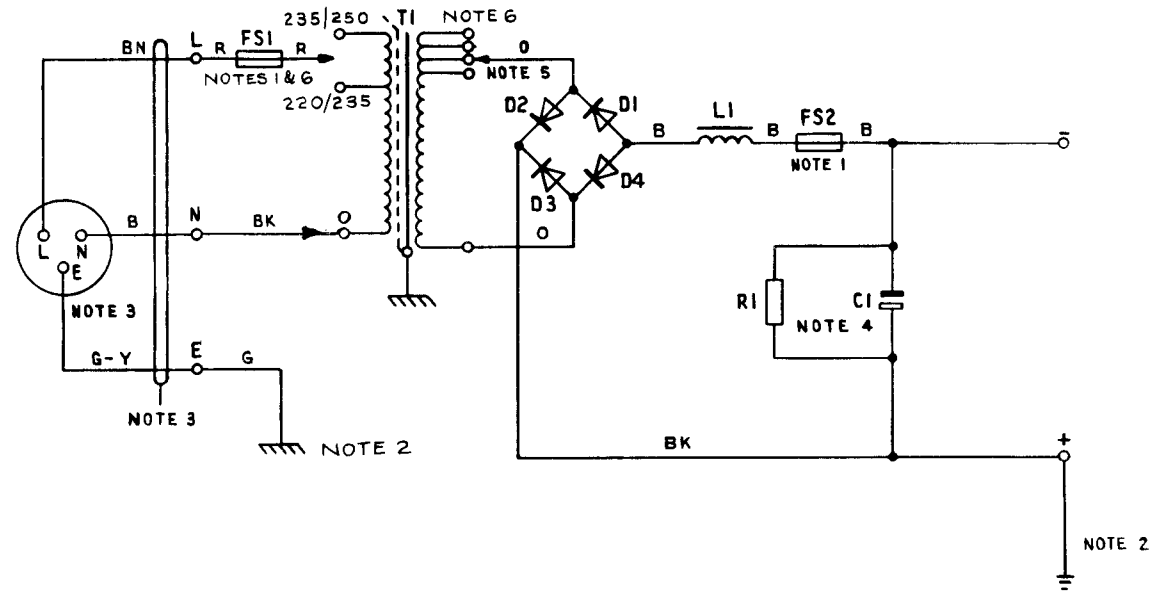


POWER-UNIT No. 70A
50V 5.0 AMP. DC
SUPPLY FROM 50Hz A.C. MAINS
FOR PABX 6

N673
ISSUE E

NOTES :-

1. FS1 :- FUSE No. 80A/3 FS2 :- FUSE No. 36A/7
2. ONE SIDE OF THE OUTPUT (NORMALLY +) SHOULD BE CONNECTED, WITH WIRE, EARTHING 9141 OR 9142, TO THE TELEPHONE SIGNALLING EARTH, WHICH MUST BE PROVIDED USING ONE OF THE METHODS SHOWN IN T1 A2 E1006. SEE ALSO SPECIFICATION D1921. THE MAINS PROTECTIVE EARTH MUST NOT BE UTILISED FOR THE TELEPHONE SIGNALLING EARTH. THE MAINS PROTECTIVE EARTH SHALL BE CONNECTED TO THE EARTH CONNECTING BLOCK OF THE POWER-UNIT WITH 1.5 mm² CONDUCTOR.
3. CORD, FLEXIBLE 3183 Y 1.5 mm², AND PLUG No. 103 TO BE REQUISITIONED SEPARATELY AND FITTED LOCALLY. PLUGS SHALL BE FITTED WITH 13 AMP FUSES.
4. VALUES OF RESISTOR AND CAPACITOR CHOSEN BY MANUFACTURER.
5. THESE TAPS ARE SET BY THE MANUFACTURER AND SHOULD NOT NORMALLY NEED TO BE DISTURBED.
6. EARLIER VERSIONS OF THE POWER-UNIT MANUFACTURED BEFORE 1983 SHOW DIFFERENT PRIMARY TAPPINGS ON T1. FUSE No. 80A/... (FS1) WAS FUSE No. 36A/...



BRITISH TELECOMMS HQRS PAPER:- W DISTN :- GENERAL	ISSUE	E	NOTE 6 ADDED. NOTES 1, 2 & 3 AMENDED. MINOR AMENDMENTS. <i>16. 8/77</i> RAS SE 2-1-2	19-12-83
		D	NEW FORMAT. TRANSFORMER 200V TAPPING REMOVED. WIRE COLOURS CHANGED. NOTES 2 & 3 AMENDED. NOTE 5 ADDED DLW TD 7-2-3	31-1-77
		C	FUSE FS1 WAS FUSE No. 36A/2 KMA	8-1-69