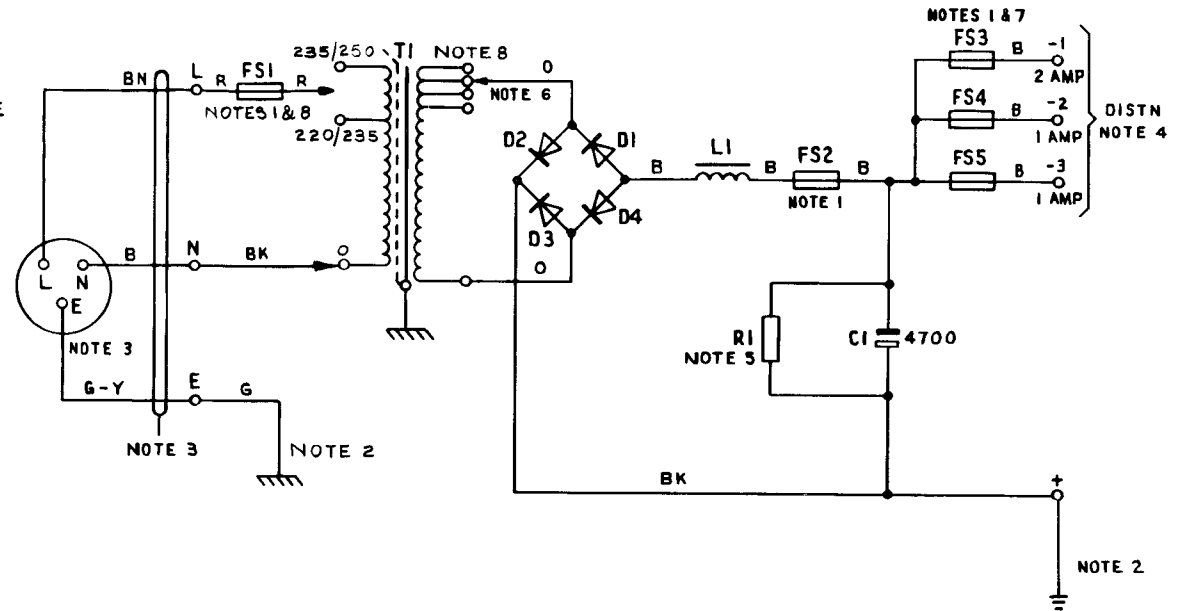


POWER-UNIT No. 62A
50V 4·0A DC. SUPPLY FROM 50HZ. A.C. MAINS

N670
ISSUE G

NOTES:-

1. FS1 :- FUSE No. 80A/2·0 FS2 :- FUSE No. 36A/5
 FS3 :- FUSE No. 36/2 FS4 :- FUSE No. 36/1
 FS5 :- FUSE No. 36/1
2. ONE SIDE OF THE OUTPUT (NORMALLY +) SHOULD BE CONNECTED, WITH WIRE, EARTHING 9141 OR 9142, TO THE TELEPHONE SIGNALLING EARTH, WHICH MUST BE PROVIDED USING ONE OF THE METHODS SHOWN IN TI A2 E1006. SEE ALSO SPECIFICATION D1921. THE MAINS PROTECTIVE EARTH MUST NOT BE UTILISED FOR THE TELEPHONE SIGNALLING EARTH. THE MAINS PROTECTIVE EARTH MUST BE CONNECTED TO THE EARTH CONNECTING BLOCK OF THE POWER-UNIT WITH 1·5mm² CONDUCTOR.
3. CORD, FLEXIBLE 3183 Y 1·5mm², AND PLUG No. 103 TO BE REQUISITIONED SEPARATELY AND FITTED LOCALLY. PLUGS SHALL FITTED WITH 3 AMP FUSES.
4. OUTPUT CABLING :- SEE APPROPRIATE INSTALLATION DIAGRAM OR INSTRUCTION.
5. VALUE CHOSEN BY MANUFACTURER.
6. THESE TAPS ARE SET BY THE MANUFACTURER AND SHOULD NOT NORMALLY NEED TO BE DISTURBED.
7. FOR A SUPPLY LOAD OF 4 AMPS RECOVER FS4 AND FS5, REPLACE FS3 BY FUSE No. 36/5 AND CONNECT LOAD TO DISTN 1.
8. EARLIER VERSIONS OF THE POWER-UNIT MANUFACTURED BEFORE 1983 SHOW DIFFERENT PRIMARY TAPPINGS ON TI. FUSE No. 80A/... (FS1) WAS FUSE No. 36A/...



BRITISH TELECOMMS HQRS	ISSUE	G	NOTE 8 ADDED. NOTES 1, 2 & 3 AMENDED. MINOR AMENDMENTS. <i>AS. BH</i> RAS SE 21·2	19-12-83
		F	NEW FORMAT. TRANSFORMER 200V TAPPING REMOVED. WIRE COLOURS & CAPACITOR VALUE CHANGED. NOTES 2, 3 & 4 AMENDED. NOTE 6 ADDED. DLW TD 7·2·3	31-1-77
		E	EARTH WIRE SPECIFIED KMA	7-3-68