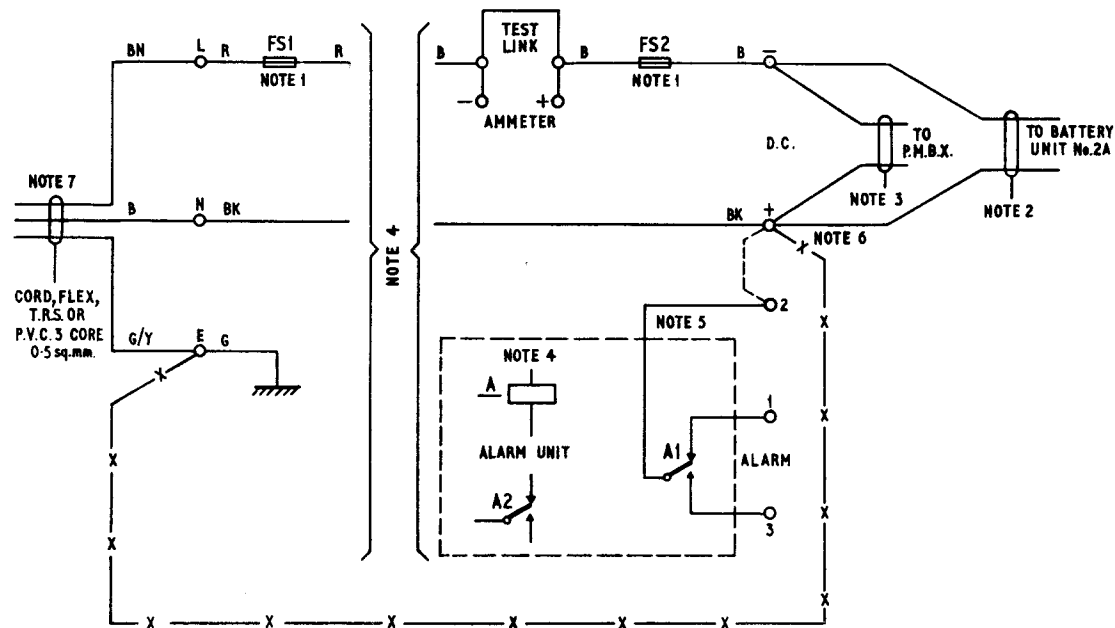


NOTES:—

- 1 FS1—Fuse No.36A/0.25. FS2—Fuse No.36/0.75  
Position in the circuit will be chosen by the manufacturer. Refer to paste-in diagram
- 2 For battery unit cabling see Dgm. N658
- 3 For PMBX cabling see Dgms. N1102 or N1103
- 4 For internal connexions reference should be made to the paste in diagram
- 5 Relay normally operated. Contact shown unoperated
- 6 One side of the output (normally +) should be connect to the telephone signalling earth with wire, Earthing 9141 or 9142. The mains protective earth must not be utilised for the telephone signalling earth. Either an entirely independent connexion to a separate earth e.g. an additional spike, shall be on a direct connexion made to the consumers earth terminal provided by the electricity board. The two earths shall be connected together at the terminal block of the rectifier by an insulated conductor similar to that used for the mains protective earth connexion. See wiring shown thus—x—x—
- 7 Plug to suit subscriber's socket outlet and cord, flex... to be requisitioned separately



PO TELECOMMS HQRS			
PAPER:— W	ISSUE		
DISTN:	D	MINOR CHANGES. <i>DP</i>	12.12.72
GENERAL	C	NEW FORMAT. METER POLARITIES REVERSED. K.M.A.	18.4.66
		TD1-2-3 SECTION	17.10.61