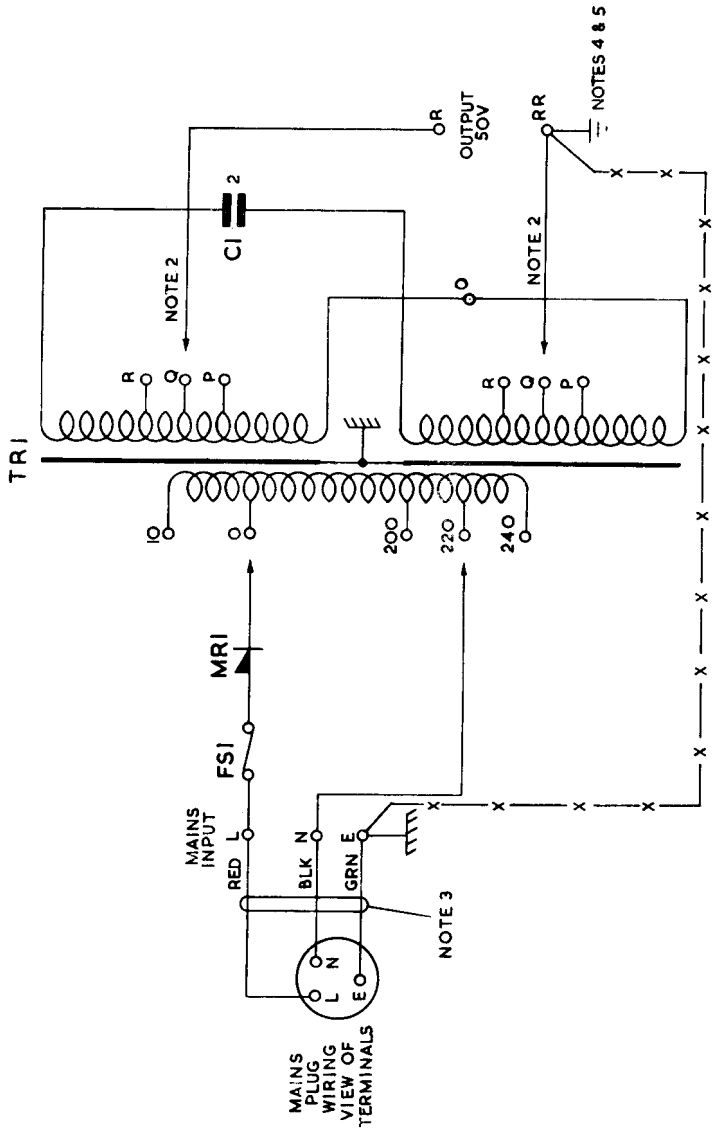


CONVERTER RINGING No.7.

(25 C/S RINGING SUPPLY FROM A.C. MAINS)

N654
PAGE 1-2
ISSUE E



P.O.E.D
S BCH.

PAPER:- W

CIRCULATION:-
GENERAL

ISSUES		
E	NEW FORMAT	K.M.A.
D	NOTE 4 AMENDED	K.M.A.
C	NOTE 4 AMENDED	C.J.C.
	H. THWRITE	53
		8-7-66
		24-3-66
		23-1-64
		25-12-59

1. FSI IS FUSE No. 36A/O.05
2. THESE TAPS (WHEN PROVIDED) ARE SET BY MANUFACTURER AND MUST NOT BE DISTURBED.
3. CORD FLEXIBLE 250V P.V.C. 3 CORE 0.0006 SQ. INS. AND PLUG TO SUIT SOCKET TO BE REQUISITIONED SEPARATELY & FITTED LOCALLY, WHEN CONVERTER IS FITTED IN A POWER UNIT, THE PLUG TO BE OMITTED AND CABLE TIED INTO POWER UNIT MAINS TERMINAL BLOCK.
4. ONE SIDE OF THE OUTPUT (TERMINAL RR) SHOULD NORMALLY BE EARTHED TO THE LOCAL TELEPHONE SIGNALING EARTH. THE MAINS PROTECTIVE EARTH MUST NOT BE UTILISED FOR THE TELEPHONE SIGNALING EARTH. AN EARTH LEAD INDEPENDENT CONNECTION TO A SEPARATE EARTH LEAD MUST BE PROVIDED, EXCEPT WHEN THE CONVERTER IS MOUNTED IN A POWER-UNIT THESE TWO EARTHS SHALL BE CONNECTED TOGETHER AT THE TERMINAL BLOCK OF THE CONVERTER BAY IN INSULATED CONDUIT OR SWITCHBOARD THAT IS USED FOR THE MAINS PROTECTIVE EARTH CONNECTION, SEE WIRING SHOWN WHEN THE CONVERTER IS MOUNTED IN A POWER UNIT THE TWO EARTHS SHOULD BE STRAPPED AT THE POWER UNIT TERMINAL BLOCK.

NOTES

5. TABLE 1 INDICATES THE CORRECT CONNECTIONS OF THE CONVERTER OUTPUT TO VARIOUS SWITCHBOARD TYPES.

TABLE 1.

TYPE OF INSTALLATION	R TERMINAL CONN. TO RING OF CORDS	RR TERMINAL CONN. TO TIP OF CORDS	REMARKS
NON MULTIPLE TYPE P.B.X.'S	'A' SIDE OF RING KEYS	'B' SIDE OF RING KEYS	NOT MORE THAN 1 POSN
CORDLESS SWITCHBOARD			