

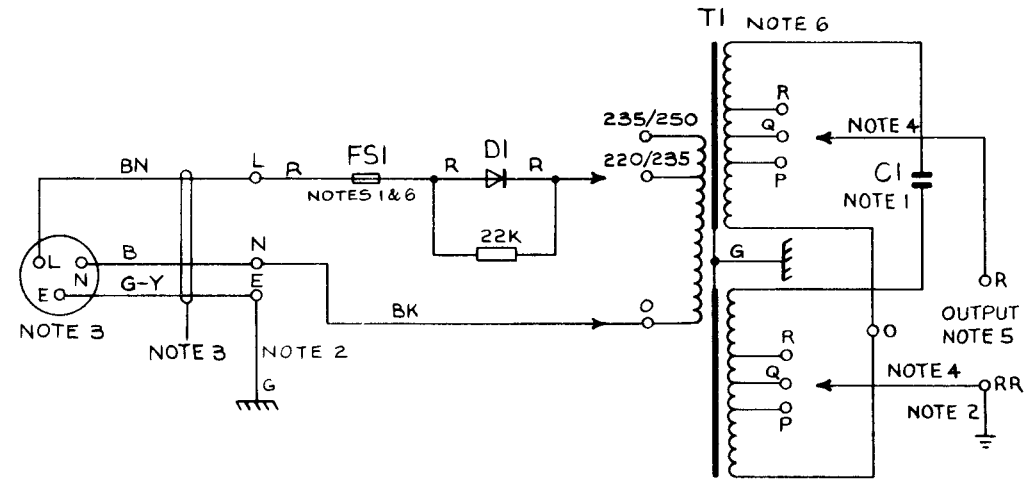
# CONVERTERS, RINGING Nos.4,5,6 AND 7 25 Hz RINGING SUPPLIES FROM 50 Hz AC MAINS

NOTES:—

1 TABLE 1. SHOWS FUSE AND CAPACITOR VALUES FOR EACH CONVERTER.

| CONVERTER              | 4   | 5  | 6  | 7   |
|------------------------|-----|----|----|-----|
| FSI<br>FUSE No.80A/... | 0.5 | 1  | 2  | 0.1 |
| C1<br>( $\mu$ F)       | 8   | 16 | 32 | 2   |

- 2 ONE SIDE OF THE OUTPUT (NORMALLY RR) SHOULD BE CONNECTED TO THE TELEPHONE SIGNALLING EARTH. THE MAINS PROTECTIVE EARTH MUST NOT BE UTILISED FOR THE SIGNALLING EARTH. SEE TI C3 Q005 AND SPECIFICATION DI921. THE MAINS PROTECTIVE EARTH MUST BE CONNECTED TO THE EARTH CONNECTING BLOCK OF THE CONVERTER RINGING WITH 1.5 mm<sup>2</sup> CONDUCTOR.
- 3 CORD, FLEXIBLE 3183 Y 0.75 mm<sup>2</sup>, AND PLUG No.103 TO BE REQUISITIONED SEPARATELY AND FITTED LOCALLY. PLUGS SHALL BE FITTED WITH 3-AMP FUSES. WHEN A CONVERTER, RINGING No.7 IS FITTED IN A POWER-UNIT, THE PLUG IS TO BE OMITTED, AND THE CABLE TEED INTO THE POWER-UNIT MAINS TERMINAL BLOCK.
- 4 THESE TAPS (WHEN PROVIDED) ARE SET BY THE MANUFACTURER AND MUST NOT BE DISTURBED.
- 5 FOR OUTPUT CONNEXIONS SEE TI C3 Q006.
- 6 EARLIER VERSIONS OF THE CONVERTERS RINGING MANUFACTURED BEFORE 1980 SHOW DIFFERENT PRIMARY TAPPINGS ON T1. CONVERTER RINGING No.7 HAD FSI WITH 50 mA RATING. FUSE No.80A/... WAS FUSE No.72/...



|                              |                  |   |   |          |
|------------------------------|------------------|---|---|----------|
| BRITISH<br>TELECOMMS<br>HQRS | W<br>C<br>S<br>I | G | NOTES 1,2,3 & 6 AMENDED. FUSE No.80A/... WAS FUSE No.72/...<br>MINOR AMENDMENTS. <i>bb</i> <i>EH</i> R.A. SE 2.1.2  | 19-12-83 |
|                              |                  | F | NOTE 6 ADDED. MINOR AMENDMENTS.<br><i>bb</i> <i>EH</i> R.A. PD 1.2.2  | 16-3-82  |
|                              |                  | E | REDRAWN. NEW FORMAT. CONV'S RINGING Nos. 5, 6 & 7<br>ADDED. (THESE WERE N652, N653 & N654). TRANSFORMER<br>200V. TAPPING REMOVED. WIRE COLOURS CHANGED. 32 $\mu$ F<br>CAPACITOR WAS 30 $\mu$ F. NOTES AMENDED. REFERENCES<br>TO T1'S ADDED. N.E.R. D.L.W. | 18.1.78  |
|                              |                  | D | NEW FORMAT. K.M.A. TD 7.2.3   | 2.6.66   |

PAPER:— W  
DISTN:—  
GENERAL