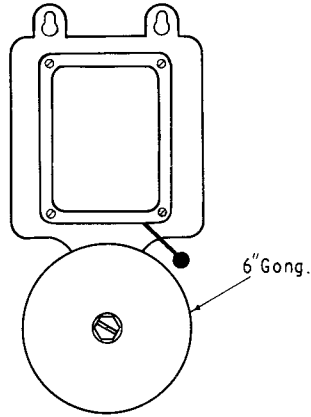
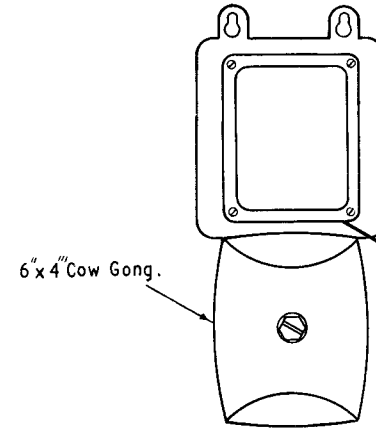


BELL No.48A No.48B OR No.48D



BELL No.48C



BELL No.48A, 48C AND 48D (NOTE 1)

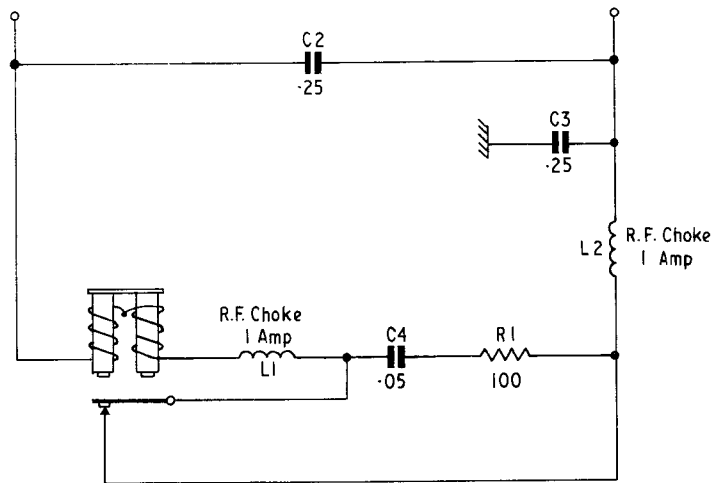


FIG.1

CIRCUIT

BELL No.48B

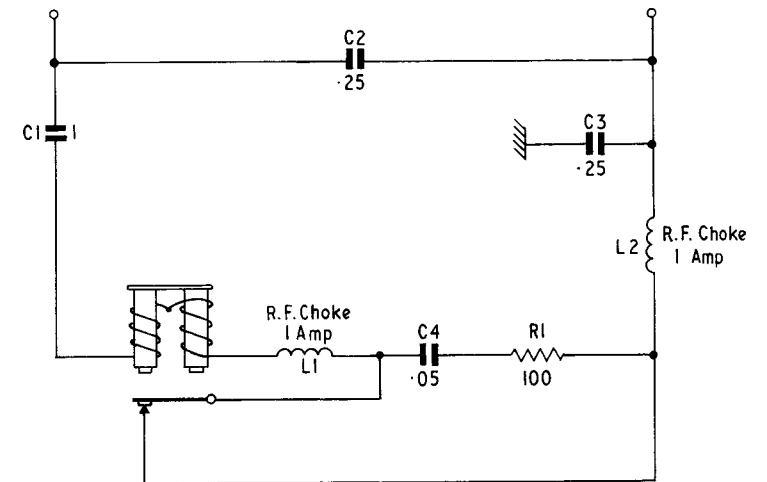


FIG. 2

References
Telecomms. Instructions
C Marketing Installation
3 Internal
M 0060

BELL	COIL RESISTANCE	OPERATING VOLTAGE RANGE
48A	12.5Ω + 12.5Ω	2 - 15Volts D.C.
48C	250Ω + 250Ω	16 - 50Volts D.C.
48B & 48D (Note 1)	250Ω + 250Ω	16-50V DC OR 50V-50Hz

NOTE

- Bell No.48D supersedes Bell No.48B for new work.
Where Bell No.48D is required to work from a 50V-50Hz AC supply, a Capacitor MC101, 1μF is to be requisitioned separately and fitted under the clamp on top of the coils. The capacitor (C1) is to be connected in series with the coil as shown in Fig. 2.

P O TELECOMMS HQRS PAPER:— W DISTN GENERAL	ISSUE		
	B	Redrawn Bell No 48D & Note 1 added. Wiring to Fig.1 & 2 modf <i>DBW</i>	19. 6. 75.
	A	New format.	3. 11. 67.