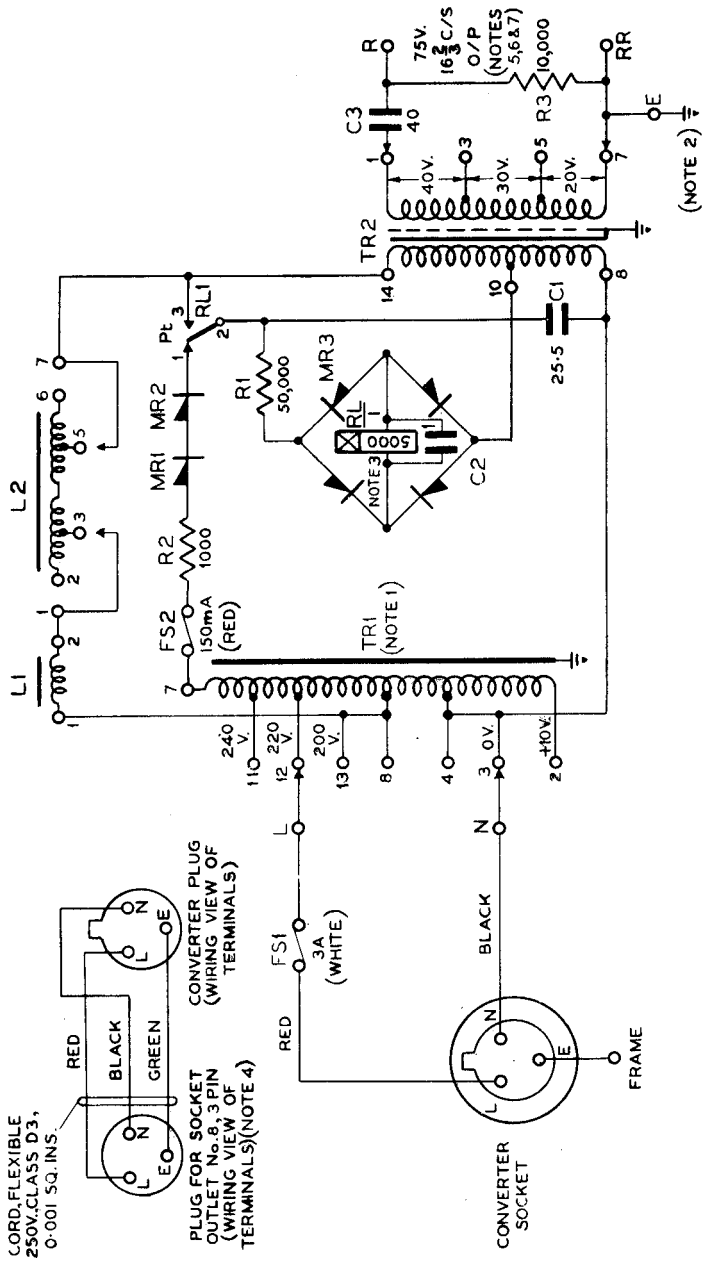


**CONVERTER, RINGING No.3**  
**17c/s RINGING SUPPLY FOR P.B.X'S**  
**DERIVED FROM 50C/S SUPPLY MAINS**

**N 643**  
**ISSUE B**  
**PAGE 1-2**



P.O.E.D.  
 S. BCH.  
 PAPER: - R

CIRCULATION  
 SPECIAL

ISSUE			
B	NEW FORMAT	K.M.4	2-6-66
A	MINOR AMENDMENTS		1-10-52
			1-11-51

NOTES :-

1. TAPPING TO BE ADJUSTED FOR MAINS VOLTAGE.
2. THIS EARTH IS SEPARATE FROM THE MAINS PROTECTIVE EARTH, CONNECTED TO THE CONVERTER FRAME. (SEE 'E.I. PROTECTION GENERAL 5 3901')
3. RELAY ADJUSTMENTS :-  
 ARMATURE TRAVEL 31 ± 3 MILS.  
 RESIDUAL 4 MILS.  
 CONTACT CLEARANCE 20 MILS. (CRITICAL)  
 LEVER TENSION 4-9 GRAMS  
 BUFFER " 15-21 GRAMS.  
 BIAS " 30-40 GRAMS
4. SUPPLY TO BE WIRED TO SOCKET, OUTLET No. 8 IN CABLE E.I. 250V., 0.002 SQ. INS. RUN IN EFFECTIVELY EARTHED CONDUIT, OR CABLE I.R.V. CORE, 250V., TWIN FLAT, 0.002 SQ. INS., SHEATH EARTHED
5. "TIP" OF CORD SWITCH, P.M.B.X. No. 1A, CONNECT "R" TO "RING" OF CORD CIRCUITS & "RR" TO "RING" OF CORD CCTS.
6. ON OTHER CORD TYPE SWITCHBOARDS, CONNECT "R" TO "RING" OF CORD CIRCUITS & "RR" TO "TIP" OF CORD CCTS.
7. ON CORDLESS P.B.X. SWITCHBOARDS, CONNECT "R" TO "A" SIDE OF RINGING KEY & "RR" TO "B" SIDE OF RINGING KEY.
8. CORD AND PLUG FOR SOCKET, OUTLET No. 8 TO BE REQUISITIONED SEPARATELY.

APPARATUS SCHEDULE			REPLACEMENT ORDER CODE (LINE)
CIRCUIT DESIGNATION	DESCRIPTION		
FS1	36 / 3-0 A.		
FS2	36 / 0-15 A.		
TR1	TRANSFORMER 23B11		S102330
TR2	" 6B101		D21298/101
L1	TOROIDAL, TYPE 113		S102380
L2	INDUCTANCE TYPE 6B105		D21298/105
C1	2.5-5 μF		S112894
C2	1 μF ± 15 %		S110879
C3	40 μF "		S112800
R1	50,000 OHMS		S69790
R2	1,000 OHMS		S67562
R3	10,000 OHMS		S69986
MR1 & MR2	H 50 (WESTINGHOUSE.)		S67214
MR3	S D 3 4 (WESTALITE)		S69789
RL	SPECIAL RELAY USING 3000 TYPE PIECE PARTS		S67228