

VACUATION

GENERAL

NOTE: THE LABEL DIAGRAM TO BE REDUCED TO DIMENSIONS GIVEN

BELL-SET No. 39A (MARK 1) WIRING

USED WITH TELEPHONE No. 248CB
BLACK, MINUS BASE

N539
28-9-38
3 PANELS - 1

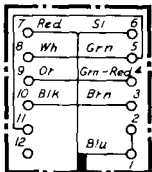


SW POSNS.	SPRG. OF 'D'
1 SPK TO EXTN.	2
2 " " EXCH. (R' SHOW)	2,3
3 " " EXTN. EXCH. HELD	4
4 EXTN TO EXCH.	

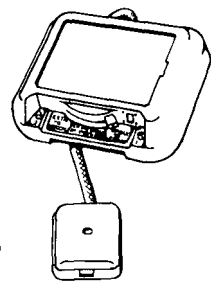
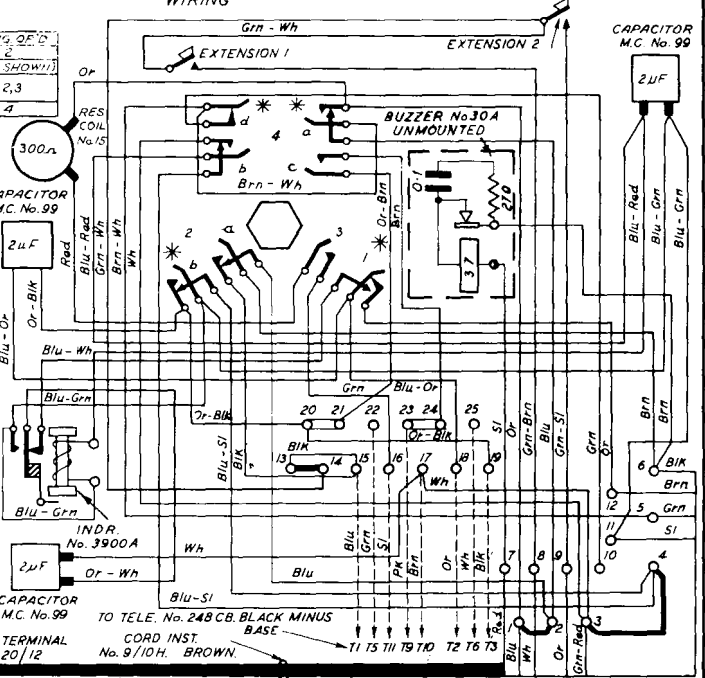
CONTACTS OF SPRG SETS 1 & 3 MAKE BEFORE CONTACTS OF SPRING SET No. 2 BREAK, WHEN MOVING SWITCH FROM POSITION No. 2 TO POSITION No. 3

* SPRING SETS MARKED THUS ARE MOUNTED ON TOP

REVISIONS:
 1. B.S. No. 39C ADDED TO ADDITIONAL PANELS 2 & 3
 2. B.S. No. 39C ADDED TO ADDITIONAL PANELS 2 & 3
 3. B.S. No. 39C ADDED TO ADDITIONAL PANELS 2 & 3
 4. B.S. No. 39C ADDED TO ADDITIONAL PANELS 2 & 3
 5. B.S. No. 39C ADDED TO ADDITIONAL PANELS 2 & 3
 6. B.S. No. 39C ADDED TO ADDITIONAL PANELS 2 & 3
 7. B.S. No. 39C ADDED TO ADDITIONAL PANELS 2 & 3
 8. B.S. No. 39C ADDED TO ADDITIONAL PANELS 2 & 3
 9. B.S. No. 39C ADDED TO ADDITIONAL PANELS 2 & 3
 10. B.S. No. 39C ADDED TO ADDITIONAL PANELS 2 & 3
 11. B.S. No. 39C ADDED TO ADDITIONAL PANELS 2 & 3
 12. B.S. No. 39C ADDED TO ADDITIONAL PANELS 2 & 3
 13. B.S. No. 39C ADDED TO ADDITIONAL PANELS 2 & 3
 14. B.S. No. 39C ADDED TO ADDITIONAL PANELS 2 & 3
 15. B.S. No. 39C ADDED TO ADDITIONAL PANELS 2 & 3
 16. B.S. No. 39C ADDED TO ADDITIONAL PANELS 2 & 3
 17. B.S. No. 39C ADDED TO ADDITIONAL PANELS 2 & 3
 18. B.S. No. 39C ADDED TO ADDITIONAL PANELS 2 & 3
 19. B.S. No. 39C ADDED TO ADDITIONAL PANELS 2 & 3
 20. B.S. No. 39C ADDED TO ADDITIONAL PANELS 2 & 3
 21. B.S. No. 39C ADDED TO ADDITIONAL PANELS 2 & 3
 22. B.S. No. 39C ADDED TO ADDITIONAL PANELS 2 & 3
 23. B.S. No. 39C ADDED TO ADDITIONAL PANELS 2 & 3
 24. B.S. No. 39C ADDED TO ADDITIONAL PANELS 2 & 3
 25. B.S. No. 39C ADDED TO ADDITIONAL PANELS 2 & 3
 26. B.S. No. 39C ADDED TO ADDITIONAL PANELS 2 & 3
 27. B.S. No. 39C ADDED TO ADDITIONAL PANELS 2 & 3
 28. B.S. No. 39C ADDED TO ADDITIONAL PANELS 2 & 3
 29. B.S. No. 39C ADDED TO ADDITIONAL PANELS 2 & 3
 30. B.S. No. 39C ADDED TO ADDITIONAL PANELS 2 & 3
 31. B.S. No. 39C ADDED TO ADDITIONAL PANELS 2 & 3
 32. B.S. No. 39C ADDED TO ADDITIONAL PANELS 2 & 3
 33. B.S. No. 39C ADDED TO ADDITIONAL PANELS 2 & 3
 34. B.S. No. 39C ADDED TO ADDITIONAL PANELS 2 & 3
 35. B.S. No. 39C ADDED TO ADDITIONAL PANELS 2 & 3
 36. B.S. No. 39C ADDED TO ADDITIONAL PANELS 2 & 3
 37. B.S. No. 39C ADDED TO ADDITIONAL PANELS 2 & 3
 38. B.S. No. 39C ADDED TO ADDITIONAL PANELS 2 & 3
 39. B.S. No. 39C ADDED TO ADDITIONAL PANELS 2 & 3
 40. B.S. No. 39C ADDED TO ADDITIONAL PANELS 2 & 3
 41. B.S. No. 39C ADDED TO ADDITIONAL PANELS 2 & 3
 42. B.S. No. 39C ADDED TO ADDITIONAL PANELS 2 & 3
 43. B.S. No. 39C ADDED TO ADDITIONAL PANELS 2 & 3
 44. B.S. No. 39C ADDED TO ADDITIONAL PANELS 2 & 3
 45. B.S. No. 39C ADDED TO ADDITIONAL PANELS 2 & 3
 46. B.S. No. 39C ADDED TO ADDITIONAL PANELS 2 & 3
 47. B.S. No. 39C ADDED TO ADDITIONAL PANELS 2 & 3
 48. B.S. No. 39C ADDED TO ADDITIONAL PANELS 2 & 3
 49. B.S. No. 39C ADDED TO ADDITIONAL PANELS 2 & 3
 50. B.S. No. 39C ADDED TO ADDITIONAL PANELS 2 & 3
 51. B.S. No. 39C ADDED TO ADDITIONAL PANELS 2 & 3
 52. B.S. No. 39C ADDED TO ADDITIONAL PANELS 2 & 3
 53. B.S. No. 39C ADDED TO ADDITIONAL PANELS 2 & 3
 54. B.S. No. 39C ADDED TO ADDITIONAL PANELS 2 & 3
 55. B.S. No. 39C ADDED TO ADDITIONAL PANELS 2 & 3
 56. B.S. No. 39C ADDED TO ADDITIONAL PANELS 2 & 3
 57. B.S. No. 39C ADDED TO ADDITIONAL PANELS 2 & 3
 58. B.S. No. 39C ADDED TO ADDITIONAL PANELS 2 & 3
 59. B.S. No. 39C ADDED TO ADDITIONAL PANELS 2 & 3
 60. B.S. No. 39C ADDED TO ADDITIONAL PANELS 2 & 3
 61. B.S. No. 39C ADDED TO ADDITIONAL PANELS 2 & 3
 62. B.S. No. 39C ADDED TO ADDITIONAL PANELS 2 & 3
 63. B.S. No. 39C ADDED TO ADDITIONAL PANELS 2 & 3
 64. B.S. No. 39C ADDED TO ADDITIONAL PANELS 2 & 3
 65. B.S. No. 39C ADDED TO ADDITIONAL PANELS 2 & 3
 66. B.S. No. 39C ADDED TO ADDITIONAL PANELS 2 & 3
 67. B.S. No. 39C ADDED TO ADDITIONAL PANELS 2 & 3
 68. B.S. No. 39C ADDED TO ADDITIONAL PANELS 2 & 3
 69. B.S. No. 39C ADDED TO ADDITIONAL PANELS 2 & 3
 70. B.S. No. 39C ADDED TO ADDITIONAL PANELS 2 & 3
 71. B.S. No. 39C ADDED TO ADDITIONAL PANELS 2 & 3
 72. B.S. No. 39C ADDED TO ADDITIONAL PANELS 2 & 3
 73. B.S. No. 39C ADDED TO ADDITIONAL PANELS 2 & 3
 74. B.S. No. 39C ADDED TO ADDITIONAL PANELS 2 & 3
 75. B.S. No. 39C ADDED TO ADDITIONAL PANELS 2 & 3
 76. B.S. No. 39C ADDED TO ADDITIONAL PANELS 2 & 3
 77. B.S. No. 39C ADDED TO ADDITIONAL PANELS 2 & 3
 78. B.S. No. 39C ADDED TO ADDITIONAL PANELS 2 & 3
 79. B.S. No. 39C ADDED TO ADDITIONAL PANELS 2 & 3
 80. B.S. No. 39C ADDED TO ADDITIONAL PANELS 2 & 3
 81. B.S. No. 39C ADDED TO ADDITIONAL PANELS 2 & 3
 82. B.S. No. 39C ADDED TO ADDITIONAL PANELS 2 & 3
 83. B.S. No. 39C ADDED TO ADDITIONAL PANELS 2 & 3
 84. B.S. No. 39C ADDED TO ADDITIONAL PANELS 2 & 3
 85. B.S. No. 39C ADDED TO ADDITIONAL PANELS 2 & 3
 86. B.S. No. 39C ADDED TO ADDITIONAL PANELS 2 & 3
 87. B.S. No. 39C ADDED TO ADDITIONAL PANELS 2 & 3
 88. B.S. No. 39C ADDED TO ADDITIONAL PANELS 2 & 3
 89. B.S. No. 39C ADDED TO ADDITIONAL PANELS 2 & 3
 90. B.S. No. 39C ADDED TO ADDITIONAL PANELS 2 & 3
 91. B.S. No. 39C ADDED TO ADDITIONAL PANELS 2 & 3
 92. B.S. No. 39C ADDED TO ADDITIONAL PANELS 2 & 3
 93. B.S. No. 39C ADDED TO ADDITIONAL PANELS 2 & 3
 94. B.S. No. 39C ADDED TO ADDITIONAL PANELS 2 & 3
 95. B.S. No. 39C ADDED TO ADDITIONAL PANELS 2 & 3
 96. B.S. No. 39C ADDED TO ADDITIONAL PANELS 2 & 3
 97. B.S. No. 39C ADDED TO ADDITIONAL PANELS 2 & 3
 98. B.S. No. 39C ADDED TO ADDITIONAL PANELS 2 & 3
 99. B.S. No. 39C ADDED TO ADDITIONAL PANELS 2 & 3
 100. B.S. No. 39C ADDED TO ADDITIONAL PANELS 2 & 3

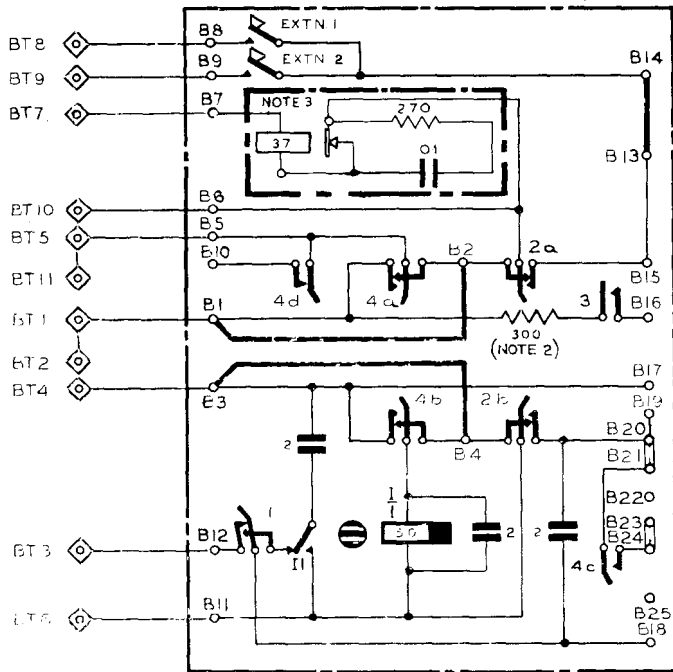


INDR. No. 3900A
 CAPACITOR M.C. No. 99
 BLOCK TERMINAL No. 20/12
 TO TELE. No. 248CB. BLACK MINUS BASE
 CORD INST. No. 9/10H. BROWN.



W

BELL-SET No 39A
(EXPLANATORY - SWITCH IN POSN. 2)



NOTES:-

1. THE BELL SET No. 39A DIFFERS FROM BELL SET No. 39 IN RESPECT OF SPRING SET No. 4C WHICH NOW CAN BE USED EITHER TO SHORTCIRCUIT THE DIAL SPRINGS (PLAN 7) OR TO SHORTCIRCUIT THE RECEIVER (PLAN 7A).

2. EARLIER SUPPLIES OF BELL-SET No. 39A ARE FITTED WITH 100 Ω RESISTORS.

3. EARLIER SUPPLIES OF BELL-SET No. 39A ARE FITTED WITH A BUZZER No. 24A UNMTD. AND A FILTER SUPPRESSION No. 6A OR No. 26A.

CIRCULATION

GENERAL

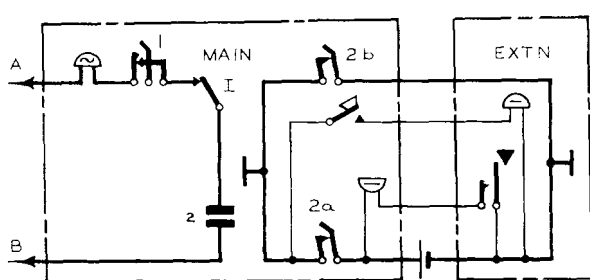
BELL-SET No. 39 & 39A (MARK I)

N539
8 PANELS-3
28-9-38

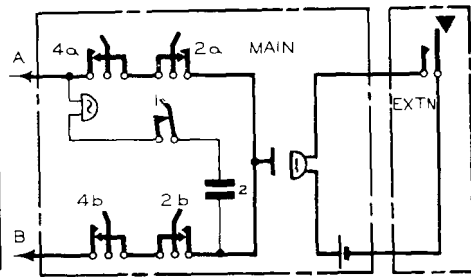
SWITCHING CONDITIONS

BUZZER No. 300 WHY 24A. PANELS 5, 6, 7 & 8 YELLOW	17-3-36	G
BS 39A & 39C NOTE 3 ADDED	2-4-36	F
RES. CIR. No 15 AMEN. No. 10, 11, 12, 13, 14, 15, 16, 17, 18, 19, 20, 21, 22, 23, 24, 25, 26, 27, 28, 29, 30, 31, 32, 33, 34, 35, 36, 37, 38, 39, 40, 41, 42, 43, 44, 45, 46, 47, 48, 49, 50, 51, 52, 53, 54, 55, 56, 57, 58, 59, 60, 61, 62, 63, 64, 65, 66, 67, 68, 69, 70, 71, 72, 73, 74, 75, 76, 77, 78, 79, 80, 81, 82, 83, 84, 85, 86, 87, 88, 89, 90, 91, 92, 93, 94, 95, 96, 97, 98, 99, 100	25-11-36	E
BS No. 39C ADDED TO ADDITIONAL PANELS 7 & 8	26-5-36	D
1196 G.F.T. II. P. 1, 2, 3, 4, 5, 6, 7, 8, 9, 10, 11, 12, 13, 14, 15, 16, 17, 18, 19, 20, 21, 22, 23, 24, 25, 26, 27, 28, 29, 30, 31, 32, 33, 34, 35, 36, 37, 38, 39, 40, 41, 42, 43, 44, 45, 46, 47, 48, 49, 50, 51, 52, 53, 54, 55, 56, 57, 58, 59, 60, 61, 62, 63, 64, 65, 66, 67, 68, 69, 70, 71, 72, 73, 74, 75, 76, 77, 78, 79, 80, 81, 82, 83, 84, 85, 86, 87, 88, 89, 90, 91, 92, 93, 94, 95, 96, 97, 98, 99, 100	14-5-36	C
1196 G.F.T. II. P. 1, 2, 3, 4, 5, 6, 7, 8, 9, 10, 11, 12, 13, 14, 15, 16, 17, 18, 19, 20, 21, 22, 23, 24, 25, 26, 27, 28, 29, 30, 31, 32, 33, 34, 35, 36, 37, 38, 39, 40, 41, 42, 43, 44, 45, 46, 47, 48, 49, 50, 51, 52, 53, 54, 55, 56, 57, 58, 59, 60, 61, 62, 63, 64, 65, 66, 67, 68, 69, 70, 71, 72, 73, 74, 75, 76, 77, 78, 79, 80, 81, 82, 83, 84, 85, 86, 87, 88, 89, 90, 91, 92, 93, 94, 95, 96, 97, 98, 99, 100	12-5-36	B
SUPERSESSION NOTE. 3 B S 39A ADDED	10-6-41	A

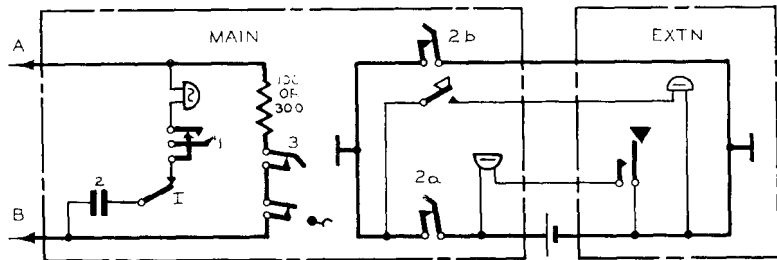
AMENDMENT



POSN 1
SPEAK TO EXTN (B S 39 & 39A ON PLAN 7 & 7A)



POSN 2
SPEAK TO EXCH (BS 39 & 39A ON PLAN 7 & 7A)



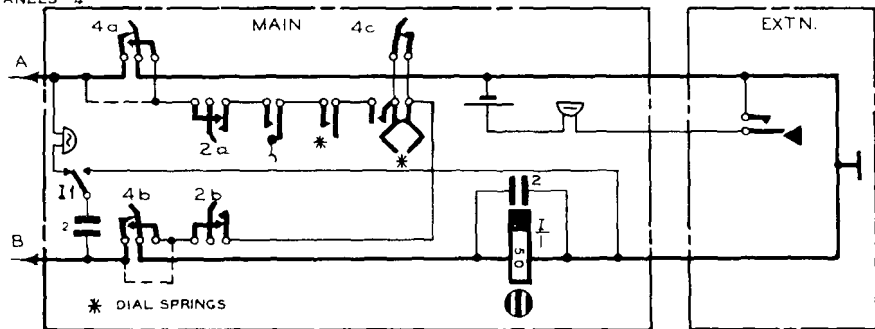
POSN 3
SPEAK TO EXTN EXCH HELD
(B S 39 & 39A ON PLAN 7 & 7A)



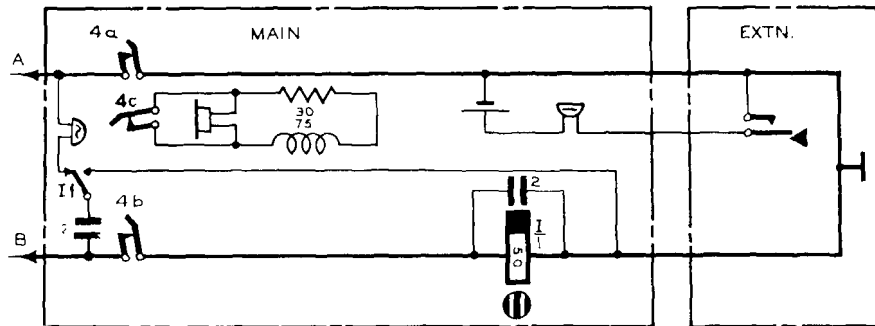
N 539

8 PANELS-4

SWITCHING CONDITIONS



POSN. 4
EXTN TO EXCH
(B.S. 39 & 39A ON PLAN 7
ALSO B.S. 39 ON
PLAN 7A BY REMOVING
STRAPS SHOWN
DOTTED)



POSN. 4
EXTN TO EXCH
(B.S. 39A ON PLAN 7A
ONLY)

NOTE:-
SPRING SET No. 4-C
IS USED TO
SHORT CIRCUIT THE
RECEIVER TO DEFEAT
OVERHEARING
FAULTS EXPERIENCED
ON B.S. 39.

CIRCULATION

GENERAL

NOTE: THE LABEL DIAGRAM, TO BE REDUCED TO DIMENSIONS GIVEN.

BELL-SET No. 39 (MARK 1)

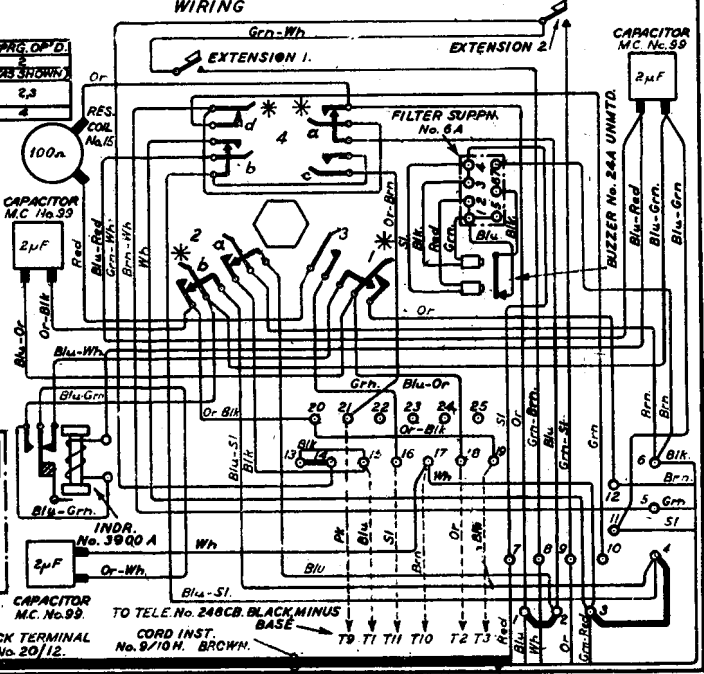
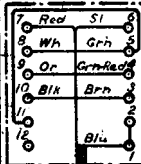
USED WITH TELEPHONE No. 248CB
BLACK, MINUS BASE.

WIRING

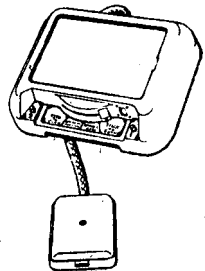
SWK POSNS.	SPRG. OP'D.
1 SPRG. TO EXTN.	2
2 " " EXCH. (AS SHOWN)	2,3
3 " " EXTN.	2,3
4 EXCH. HBLD.	4
4 EXTN. TO EXCH.	4

CONTACTS OF SPRG SETS 1 & 3 MAKE BEFORE CONTACTS OF SPRING SET No 2 BREAK, WHEN MOVING SWITCH FROM POSITION No 2 TO POSITION No 3.

* SPRING SETS MARKED THIS ARE MOUNTED ON TOP



N539
28-9-38
B-2 PANELS 5



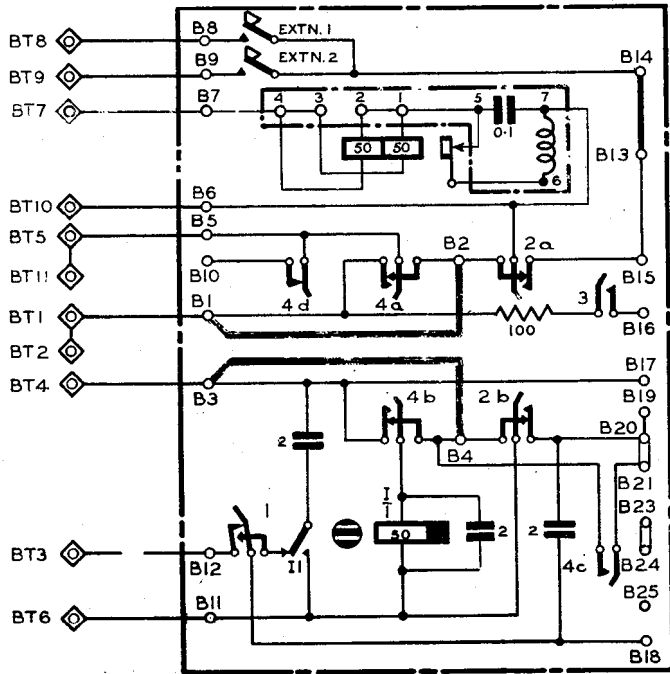
WHEN THE TELE. No 248 IS PROVIDED WITH A CORD INST. No 8/10E THE EXTRA GREEN AND WHITE CONDUCTORS OF THE CORD ARE CONNECTED TO TERMINALS No 22 AND No 25 RESPECTIVELY

FOR PLAN No. 5 C.B. & AUTO. SYSTEMS SEE DIAGRAM No. N 430B.
FOR PLAN No. 7 C.B. & AUTO. SYSTEMS SEE DIAGRAM N 4310.

BUZZER W/TON WAS 244 PINNED P.T. 1, 18 & 19 FROM 17-258 G
...
BUZZER NO. 244 UNMTD.
...
RES. COIL No. 15 WAS No. 12 - 100Ω
SUPERSESION NOTE B.S. 39A ADDED 10-6-41 A

Y Y

BELL-SET No. 39
(EXPLANATORY - SWITCH IN POSN. 2.)



BELL-SET No. 39C (MARK 1)

USED WITH TELEPHONE No. 248CB

WIRING

CALL EXCH.

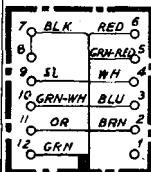
N539
28-9-38
8 PANELS-7

GENERAL

S.W. POSNS.	SPRG. OP'D
1 SPK TO EXTN.	2
2 " " EXCH. (AS SHOWN)	
3 " " EXTN. EXCH. HELD	2, 3
4 EXTN. TO EXCH.	4

CONTACTS OF SPRG. SETS 1&3 MAKE BEFORE CONTACTS OF SPRING SET No. 2 BREAK. WHEN MOVING SWITCH FROM POSITION No. 2 TO POSITION No. 3.

* SPRING SETS MARKED THUS ARE MOUNTED ON TOP.

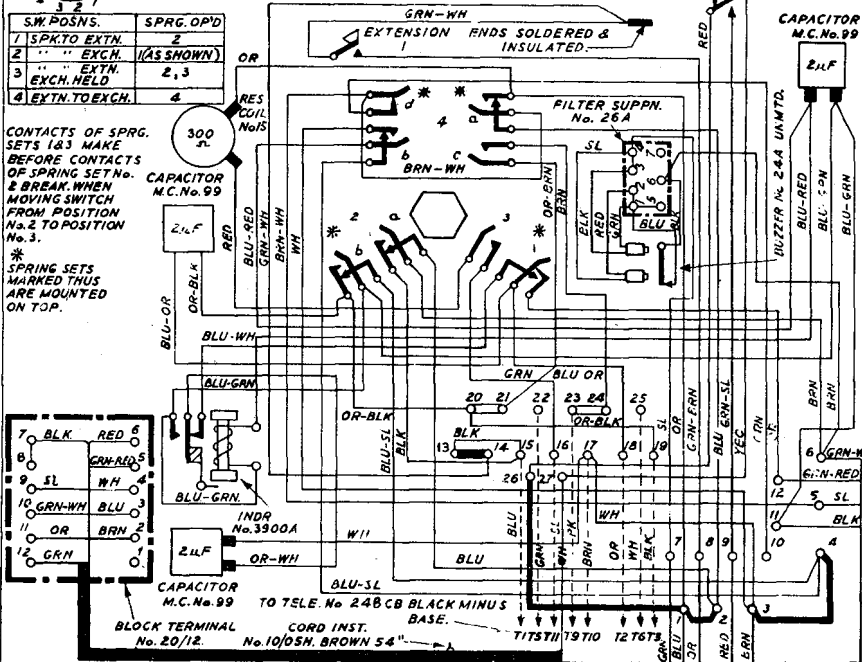


BLOCK TERMINAL No. 20/12.

TO TELE. No. 248CB BLACK MINUS BASE.

CORD INST. No. 10/05H. BROWN 54"

TIT5711 7910 127673



CAPACITOR M.C. No. 99

2µF

2µF

2µF

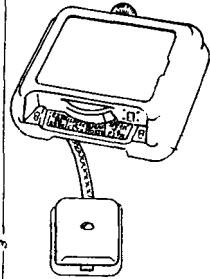
2µF

2µF

2µF

2µF

2µF



NOTE :-
THE LABEL DIAGRAM TO BE REDUCED TO DIMENSIONS GIVEN.

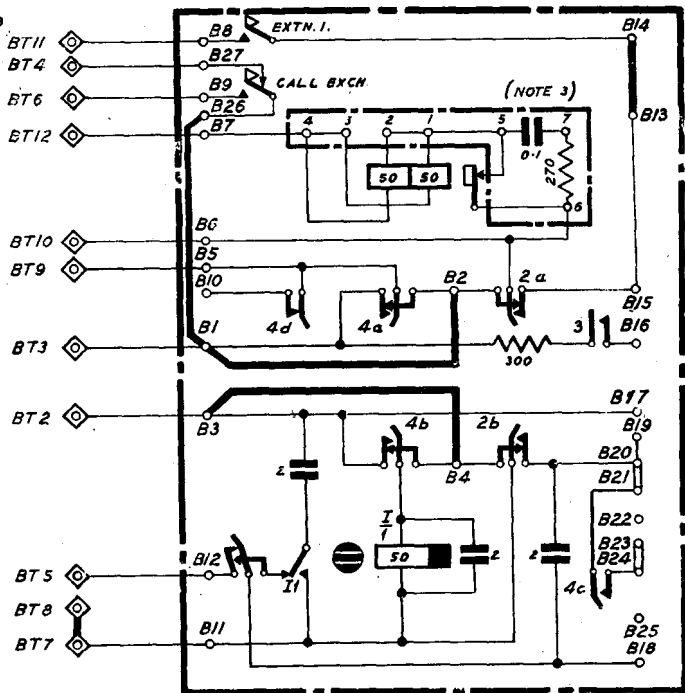
FOR INTERNAL EXTENSION PLAN Nos. 7&TA ONLY AUTO SHARED SERVICE (SEPARATE METERING) SYSTEM.

BUTTER No. 39A WH 14R. PANELS \$6.18 & YELLOW.
 E.S. 39A & 39C. NOTE 3. ADDED.
 RESISTOR COIL No. 39C AMENDED TO 390R ON B/S 39C.
 DIS No. 39C ADDED TO ADDITIONAL PANELS 7 & 8
 SPRING SET 4C PANEL 2 CONNECTIONS REVERSED
 RES COIL No. 15 WAS No. 12 - 1000 Ω
 SUPERSESSION NOTE & B/S 39A ADDED
 17-3-50 G
 2-4-52 F
 23-7-50 E
 26-5-50 D
 11-8-48 C
 28-2-48 B
 30-6-47 A

N539

8 PANEL S-8

BELL-SET No. 39C (EXPLANATORY-SWITCH IN POSN. 2)



NOTE:-

1. THE BELL-SET No. 39C DIFFERS FROM THE No. 39A IN THAT THE "CALL EXCHANGE" BUTTON IS FITTED IN PLACE OF EXTN. 2 BUTTON.
2. BELL-SET No. 39C IS FOR USE ON EXTENSION PLAN Nos. 7 & 7A. AUTO. SHARED SERVICE (SEPARATE METERING) SYSTEM.
3. EARLIER SUPPLIES OF BELL-SET No. 39C ARE FITTED WITH FILTER SUPPRESSION No. 6A.