

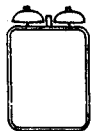


CIRCULATION  
GENERAL

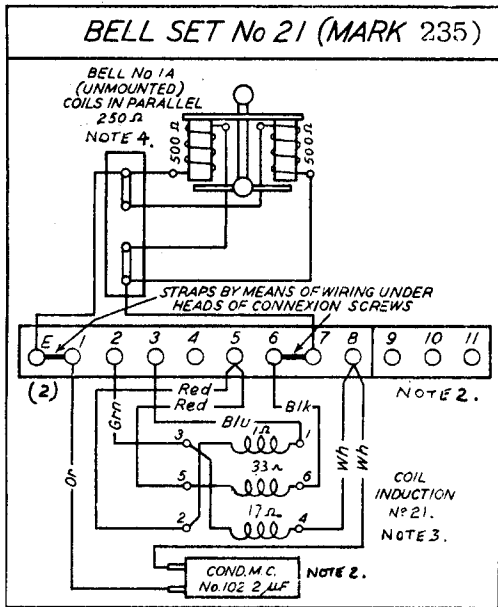
# BELL SET No. 21 (MARK 3)

N 521

SHEET 2 (2 SHEETS)  
SUPERSEDES N 521 (SHEET 1)  
FOR NEW WORK.



27137 B  
Sheet 1 amended.  
Standard



NOTES:-

- 1) THIS BELL-SET IS USED IN CONJUNCTION WITH TELE. No.156LB & 196LB IN CB'S No.1. AREAS. SEE DIAG. N1296.
- 2) EARLIER VERSIONS OF BELL-SET No.21 Mk.234 USED AN 8 TML. STRIP CONNECTOR, COND. MC NO.30, AND COIL INDUCTOR, No.15.
- 3) EARLY VERSIONS OF THIS BELL-SET (Mk235) USED COIL, INDUCTOR, No.15.
- 4) THE ARRANGEMENT SHOWN IS FOR 22V EXCHANGES. FOR 50V SYSTEMS RE-WIRE THE CONNECTIONS TO PRESENT A BELL-COIL IMPEDANCE OF 1000 ohms.

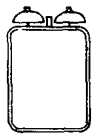
W

CIRCULATION  
GENERAL

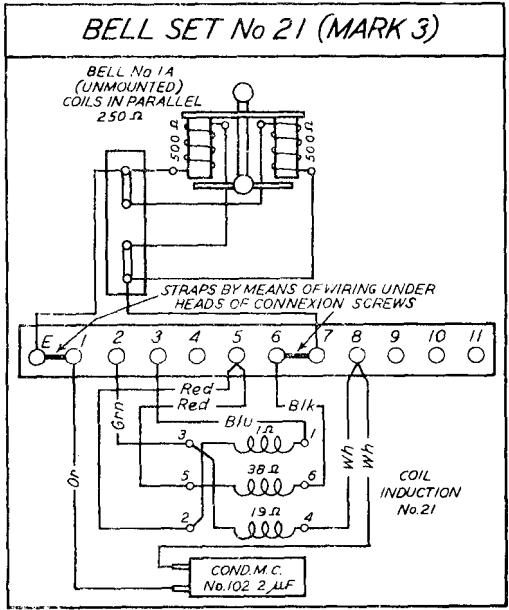
# BELL SET No. 21 (MARK 3)

N 521

SHEET 2 (2 SHEETS)  
SUPERSEDES N521 (SHEET 1)  
FOR NEW WORK.



Sheet 1 amended. 27137 B



NOTE:-  
THIS BELL-SET IS USED IN CONJUNCTION WITH TELE. No. 156LB & 196LB IN C.B.'S. No. 1 AREAS. SEE DIAG. N1296.

W