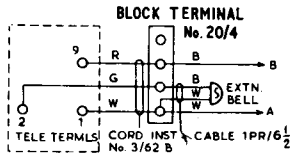


NOTES:

- When Extension Bell is required remove strap from telephone terminals 1 and 2 replace cord inst., No. 2/94B by cord inst., 3/62B and connect Extension Bell on Block Terminal No. 20/4 thus



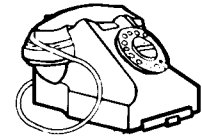
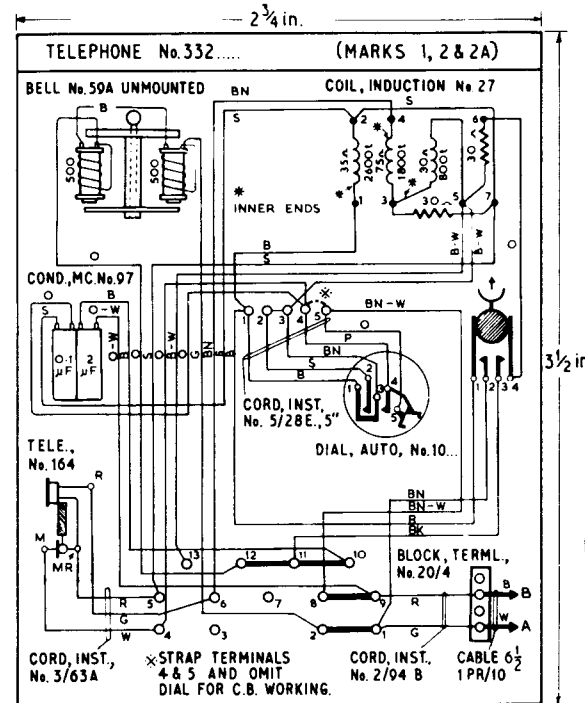
- Early issues have cord inst. No. 3/62B fitted with G and W conductors strapped on Block Terminal No. 20/4. This strap to be removed when Extension Bell is required.
- Differences between MKS. 1, 2 & 2A of Tele. No. 332... are:
 - MK. 1 has Receiver, Inset No. 1L in Tele. No. 164.
 - MK. 2 has Receiver, Inset No. 2P in Tele. No. 164.
 - MK. 2A as for MK. 2 but has Switch Bracket & Plungers of improved design.

TELEPHONE No. 332

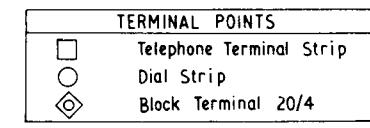
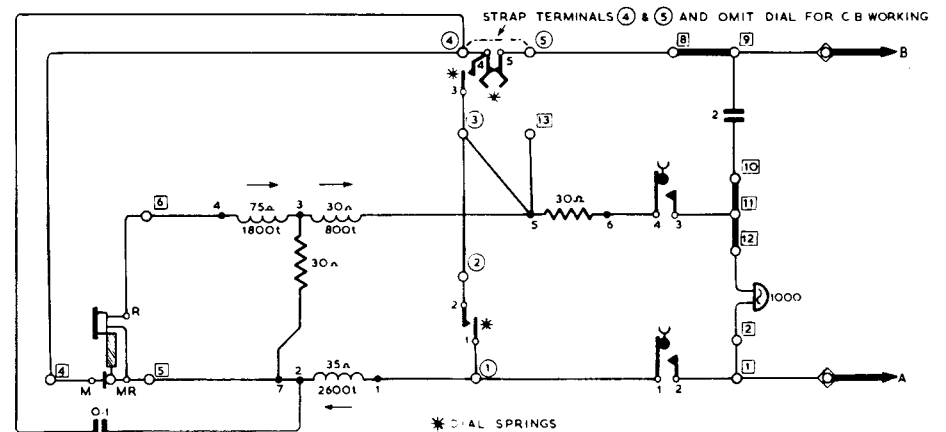
COMBINED MICROTELEPHONE FOR USE IN C.B. & AUTO. AREAS ON DIRECT EXCH. LINES ALTERNATIVE TO TELEPHONE No. 1/232..... & BELL SET No. 26.

N. 432

ISSUE E



EXPLANATORY



| | | | |
|-------------------------------------|--------|-------------------------------------|-------------|
| P. O. T. D. D. TD 1.4.1; | | | |
| PAPER : W CIRCULATION GENERAL | ISSUES | E NEW FORMAT | 22 - 2 - 68 |
| | | RETRACED, NO AMENDMENT | 31 - 1 - 57 |
| | | D MARK Nos 2 & 2A AND NOTE 3 ADDED. | 3 - 10 - 51 |
| | | E. S. R. | S1 |