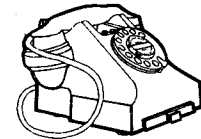
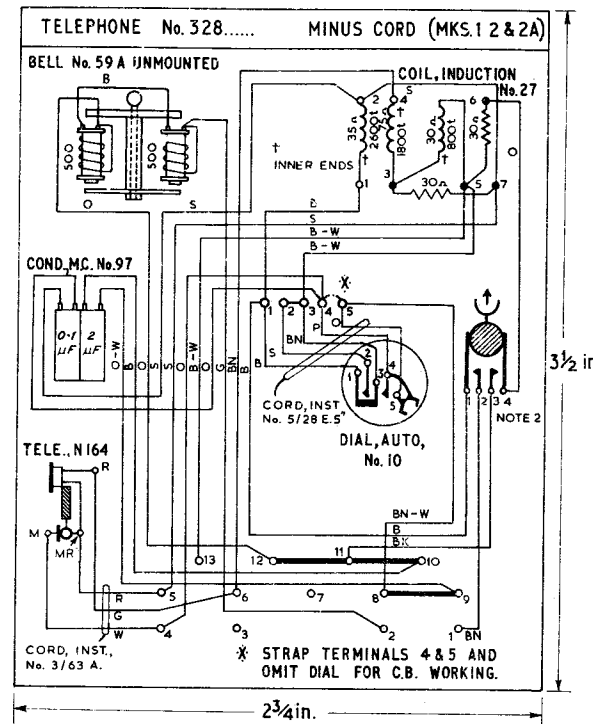


NOTES:

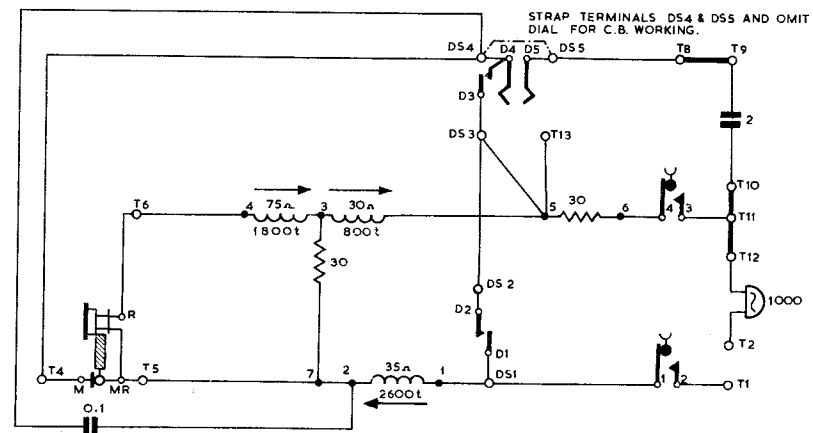
1. For detailed connexions when used on Extn. Plans see N.4300 series of diagrams.
2. Spring 1 of Cradle Switch Springset assembly is adjacent to the mounting.
3. Earlier issues of Tele.No.328...minus cord have coil, induction No.22 instead of No.27. The external connexions are the same but the winding resistances and turns ratios of the two coils are different.
4. Differences between MKS.1, 2 & 2A of Tele.No.326...minus cord are:-
 MK.1 has Receiver, Inset No.1L in Tele.No.164.
 MK.2 has Receiver, Inset No.2P in Tele.No.184.
 MK.2A as for MK.2 but has Switch Bracket & Plungers of improved design.

TELEPHONE No. 328..... MINUS CORD
 COMBINED HANDSET TELEPHONE (WITH MAGNETO BELL)
 FOR USE IN C.B. & AUTO AREAS ON EXTENSION PLANS
 WITH, OR WITHOUT, KEYS No. 302, 303A OR 304 A.

N. 428
 PAGE 1-2
 ISSUE E



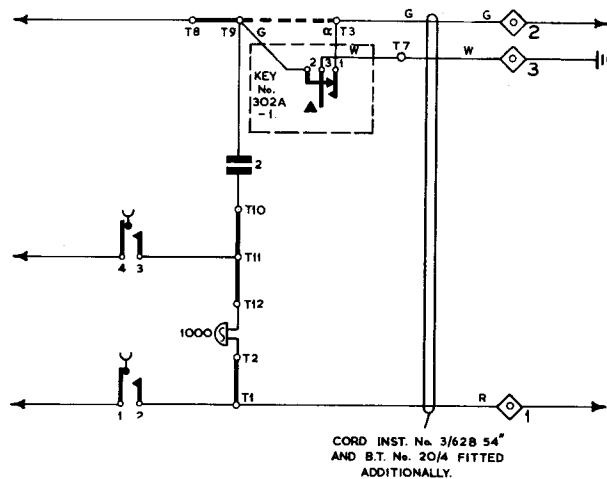
EXPLANATORY



→ Indicates direction of windings on coil, induction.

P.O.T.D.D. TD 1.4.1			
PAPER: W CIRCULATION GENERAL	ISSUES		
	E	NEW FORMAT	25 - 1 - 68
	D	PANELS 3 & 4 ADDED	16 - 12 - 60
		E.R. S/BR.	26 - 6 - 37

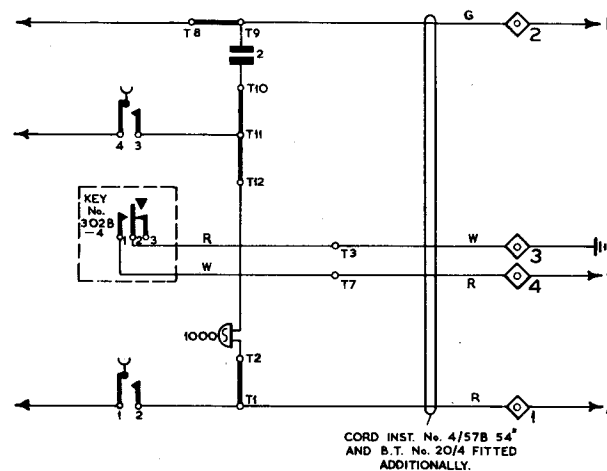
WITH KEY No.302A-1 AND LABEL No.252J.
CONNEXIONS FOR USE ON 2-WIRE P. B. X.
EXTENSIONS WITH RECALL



NOTES:

1. Arrange Straps as shown and fit cord, Block Terminal, Key and Label as indicated.
2. Strap T3-T9 for 'Earth Loop' recall.
3. Omit Strap T3-T9 for 'One Line Earth, Loop Disconnected' recall.

WITH KEY No.302B-1 AND LABEL No.252J.
CONNEXIONS FOR USE ON PMBX'S WITH
ADDITIONAL SIGNALLING C-WIRE



NOTES:

1. Arrange Straps as shown and fit cord, Block Terminal, Key and Label as indicated.