

CIRCULATION.

GENERAL.

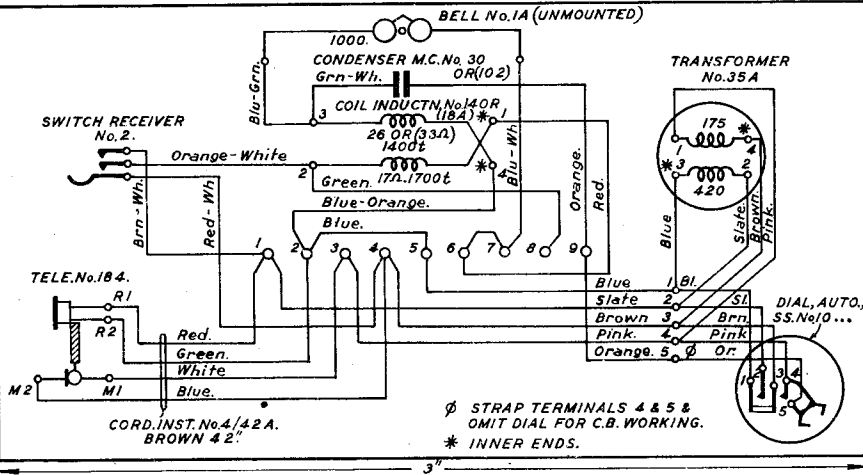
TELEPHONE No.221...

COMBINED WALL MICROTELEPHONE FOR USE IN C.B. & AUTO.AREAS.

N. 321
2 PANELS-2.
20-12-44.

SUPERSEDED FOR NEW WORK BY N.433.

TELEPHONE No.221... (MARK 1.)



NOTE:-

WHEN EXTENSION BELL IS REQUIRED REMOVE STRAP BETWEEN TERMINALS 6 & 7 & CONNECT BELL.

LABEL DIAGRAM TO BE TO DIMENSIONS GIVEN.

2101556 A

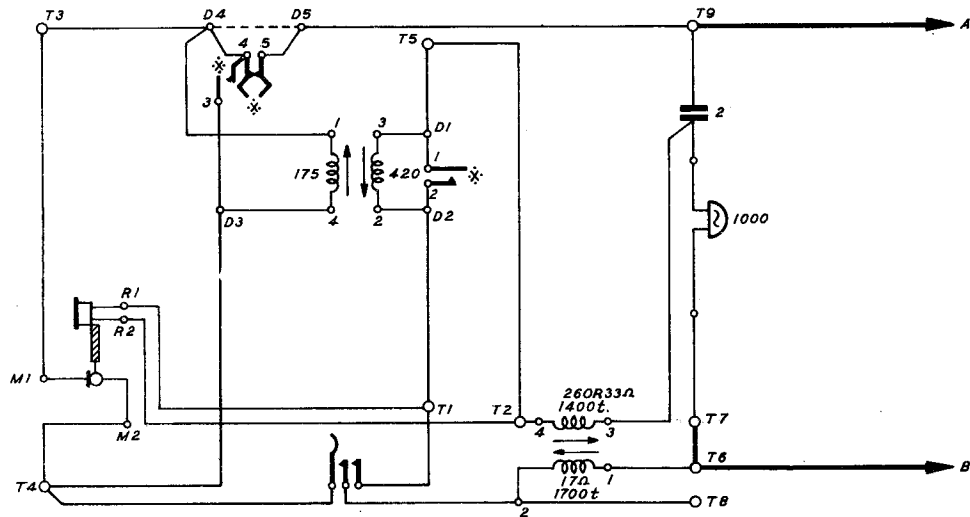
SUPPSEN. NOTE ADDED

AMENDMENT.

Y

N. 321.
2 PANELS-1.

EXPLANATORY.



*: DIAL SPRINGS
 → INDICATES DIRECTION OF WINDINGS
 ON COIL INDUCTION & TRANSFORMER No.35A.

TERMINAL POINTS.	
T.	TELE TERMINAL STRIP.
D.	DIAL " "