

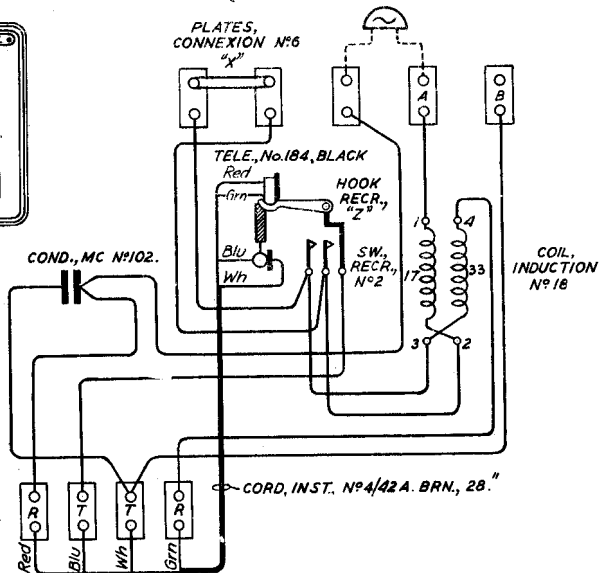
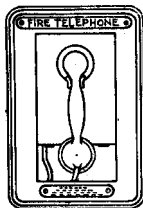
TELEPHONE No. 47 (MARK 4)

FOR DIRECT TELEPHONE LINES BETWEEN
PRIVATE BUILDINGS AND FIRE STATIONS.
(C.B. WORKING)

N 147

26-5-37

			A
Hook, Receiver wgs "U" & Cord, Inst., No. 35837			
4/42 A. Brn. was 42"			
Amendment			



PLATES,
CONNEXION N°6

NOTES:-

1. TELEPHONE WIRED FOR "HOWLER" OR MAGNETO SIGNALLING. WHEN MAGNETO BELL IS REQUIRED REMOVE STRAP "X" AND CONNECT BELL AS SHOWN THUS - - -
2. FOR CONNEXIONS OF TELE. N°47 MARK 234/5 AND MARK 3 AND STATION APPARATUS SEE DIAGRAM FA 26 AND FA 113.

FIG. 1. THEORETICAL CONNEXIONS WITH RECEIVER ON REST.

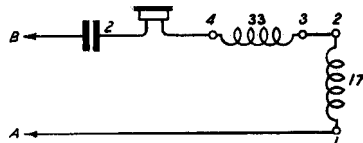


FIG. 2. THEORETICAL CONNEXIONS WITH RECEIVER OFF REST.

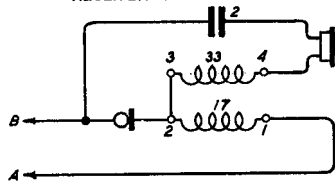


FIG. 3. THEORETICAL CONNEXIONS WITH RECEIVER ON REST & MAGNETO BELL CONNECTED.

