

= N116,
1/2

TABLE
TELEPHONE,
WITH GENERATOR
" B " COMPLETE.

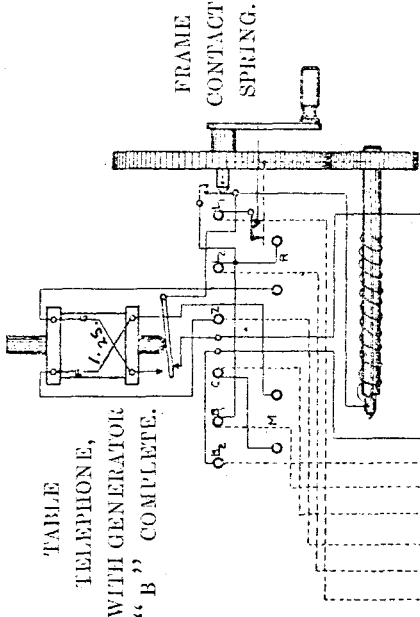
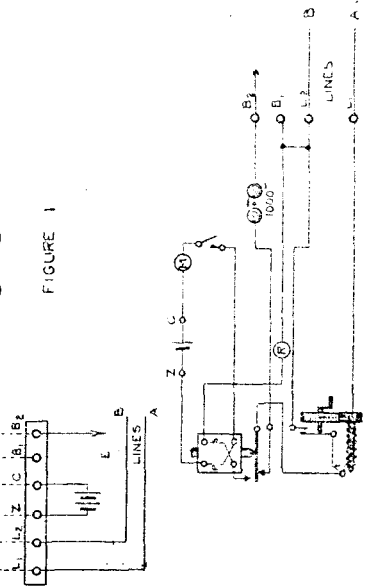


FIGURE 1



APPARATUS SCHEDULE.

= N116.
2/2

Telephone No. 16. The title includes Cord, Flexible, No. 604; Strip, Flexible Cord Connection, 6-terminal; Bell, Magneto, 1,000 ohms; Generator, 500 ohms; Coil, Induction, $\frac{25}{1}$; and Telephone No. 28.

Battery, Leclanché, Agglomerate, 6-block, 2-cell.

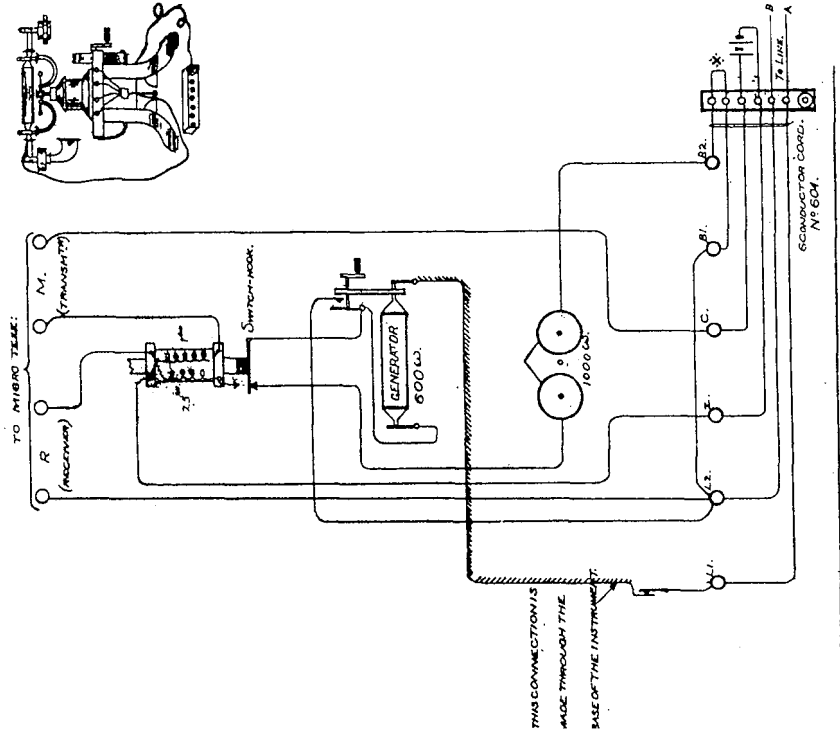
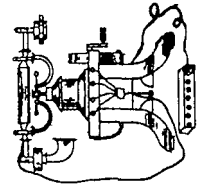
Hook, Receiver, "C" (if required)
Receiver, Watch, "D," Complete } only).

If an Extension Bell is required, a Bell, Magneto, 100 ohms, and Switch, Tumbler, 3 ampères (bronzed), should be requisitioned and connected between Terminal B2 and Earth.

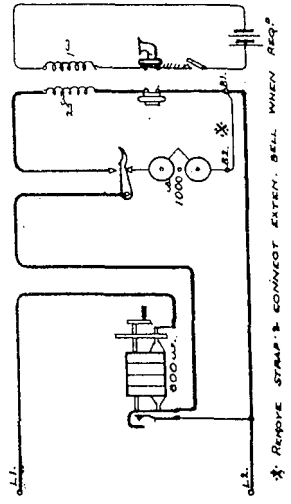
Fig. 1 is a wiring diagram of the instrument, which is similar externally to that shown in Plate 87, but with the connections altered to suit the conditions of the system. Future deliveries of Table Telephones, with Generator (Telephones No. 18), will be wired to this diagram.

Fig. 2.—Explanatory diagram of the above.

This instrument should also be fitted (when a table set is required) for working on long extension lines from Switchboards, Magneto (C.B.). See Plates 27 and 30.



T.L. 208.



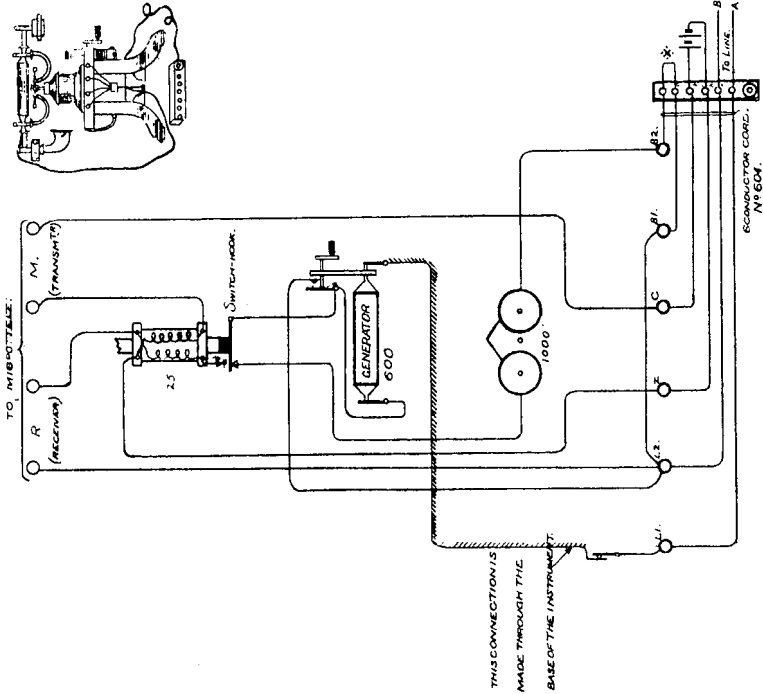
116
[Handwritten signature]

TELEPHONE N^o 16.

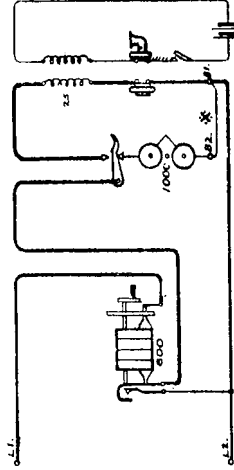
N. 116.

13.3.17.

T.L. 208.

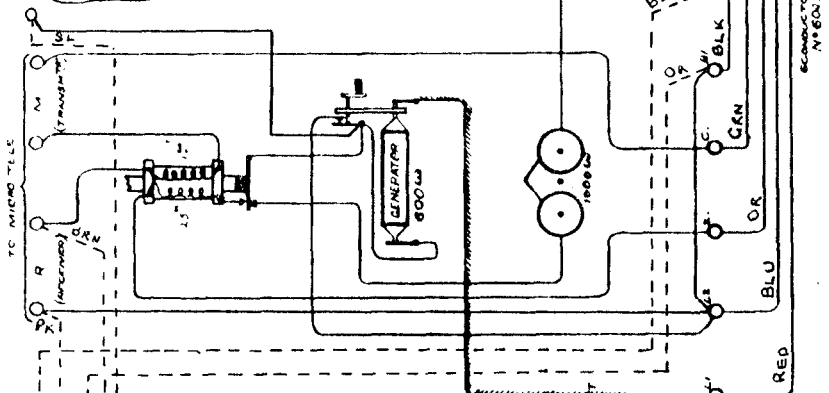
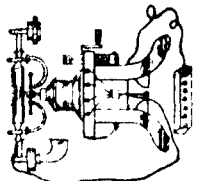


EXPLANATORY



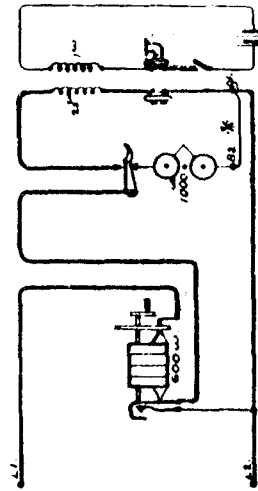
* R: HAVE STRAP & CONNECT EXTEN. BELL WHEN REQ.

T.L. 208. OFFICE OF E. I. C.
G. P. O.



DIAL AUTO No 10
WIRE CUT AT "X"
COND. 102 M.C IS
CONNECTED AT *
IN BETWEEN 5 & 6

THIS CONNECTION IS
MADE THROUGH THE
CASE OF THE INSTRUMENT



REMOVE SWITCH & CONNECT SPEN. SW. WITHIN REG.