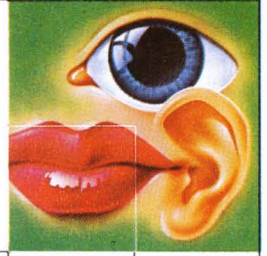


Electronic key telephone system



**New facilities
more comfort:
system E 6 and E12**

The new computer controlled key system.

The E 6 and E 12 systems are electronic communication systems with micro-processor control of the latest technology. It therefore does not require:



wall-mounted junction boxes



thick interconnection cables



expensive installation

Our new E 6 and E 12 key system offers you more convenience in features and installation.

Each telephone set is linked to the central control unit by a thin 4-core cable.



You can handle up to 6 trunk lines

Key telephone systems have always been used, whenever a few people have a lot of telephoning to do. Perhaps a small firm, a travel bureau, a lawyers practice or an agency. But it could also be a team in a large organization, for example the loss adjuster in an insurance company or the credit control manager in a clothing factory.

The large E 12 key system includes up to 6 trunk lines for simultaneous use. The smaller system provides three trunk lines. Both can be started with only two telephone sets and both can be progressively expanded to their maximum size.



New features for your comfort

Previous key systems already provided a high level of convenience. We have developed new features which add even more convenience to telephoning.

You take for example a call just by lifting the handset, without touching any key.



Uniform design of all telephone sets

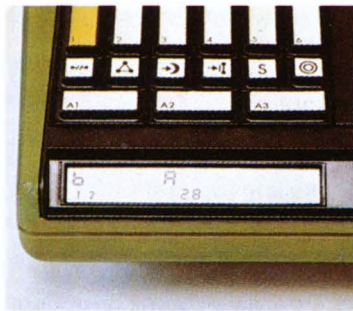
The attractive styling in green and brown is the same for all sets. The key set is not larger than an ordinary telephone made by DeTeWe.

Control of charges (optional)

Call metering is no problem for the system. Call meters can be interrogated at any time, irrespective of whether you need to know the charges per call, for each trunk line or for each extension. The LCD-display indicates the number of call units or the effective costs.

The system displays also the actual amount during your call. This always shows you costs running up, whether you are speaking or waiting.

(For this function the system requires the metering pulses transmitted by the public exchange during the call.)

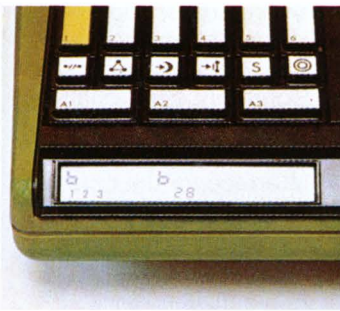


Busy signal on the telephone

Your telephone indicates which other set is free or busy. In the past, you did not know whether no reply meant line busy or no one there to take the call. A brief glance at your telephone, and you know whether or not Mr. Jones is speaking.

Your display indicates also the status of all exchange lines for

- incoming calls
- conversation
- hold
- busy
- free



No one can listen in

Internal connections of conventional key systems either had no secrecy or only one speech channel.

Third parties were able to cut in and take part in the conversation. With the new system you can prevent this by depressing a key. This applies to all channels and the system has as many secrecy keys as there are telephone sets.

Opening the door by telephone (optional)

The bell rings. Using the E 6 or E 12 system you enquire who it is and open the door by pressing a key.

Three-party conversation (optional)

Two telephone sets of the system can talk simultaneously with a caller on a trunk line. Everybody can hear and talk – ideal for a conference. Conferences for internal calls are of course also possible, and with more than only three telephones.

Call handling without a telephone operator

All incoming calls are taken by one set. If this is not manned, the trunk lines can be switched to "night service" each individually or all together. Calls are then taken by the telephone sets which were previously programmed for this function. You can decide which telephone is to take calls at night, even each line on another set.

Calling is easier with memory dialling (optional)

With memory dialling you can store up to 10 telephone numbers in your set.

In addition the last number you dialled is stored. This facilitates redialling when the called party is busy.



Features and general specification

- Identification of calling extension
- Calls answered just by lifting handset
- Call cost indication: – per call (option)
per extension (option)
per line (option)
- Single button calling to extensions
- Distinctive tone signalling
- I-hold
- Liquid crystal display
- No hold loss
- Power failure transfer for all exchange lines (option)
- B. T. line status indication
- Extension status indication
- Locking key on each extension (option)
- Complete privacy on all calls
- Secretary function
- Unlimited internal calls
- Flexible night service
- Conference (internal)
- Conference (external) (option)
- Interface for the connection of (option)
answering machine
facsimile transceiver
modem
- Push button operation
- Automatic hold
- Memory dialling
10 numbers (option)
- Memory dialling
55 numbers (option)
- Public address access.
- Door phone connection (option)
- Tone volume control
- DTMF or impulse dialling
- Change of service classes for night service sets
- Loudspeaker accessory (option)
- Various classes of service
- Last number repeat dialling (option)
- B. T. line flexibility
- Universal night service answering (option)
- External extension (option)
- Hands free accessory (option)
- PABX connection

Data:

	E 6	E 12
Capacity:		
exchange lines	3	6
internal speech paths	6	12
key sets	6	12
Dimensions and weight:		
Central control unit	420 x 395 x 195 mm 10 kg (max)	559 x 395 x 195 mm 13 kg (max)
Key telephone set	225 x 181 x 85 mm 1,5 kg	225 x 181 x 85 mm 1,5 kg
Max. power consumption	55 W	88 W



Power supply:
240 VAC (+/-6%), 50-60 Hz
Other primary voltages and data for battery connection on request.
Ambient temperature: -25°C to +70°C
Relative air humidity: 20% to 70%
Max. distance between key telephone set and central control unit with wire diameter of 0,6 mm:
400 m (~50 Ohms loop)
Cable:
2 pairs (star cabled)