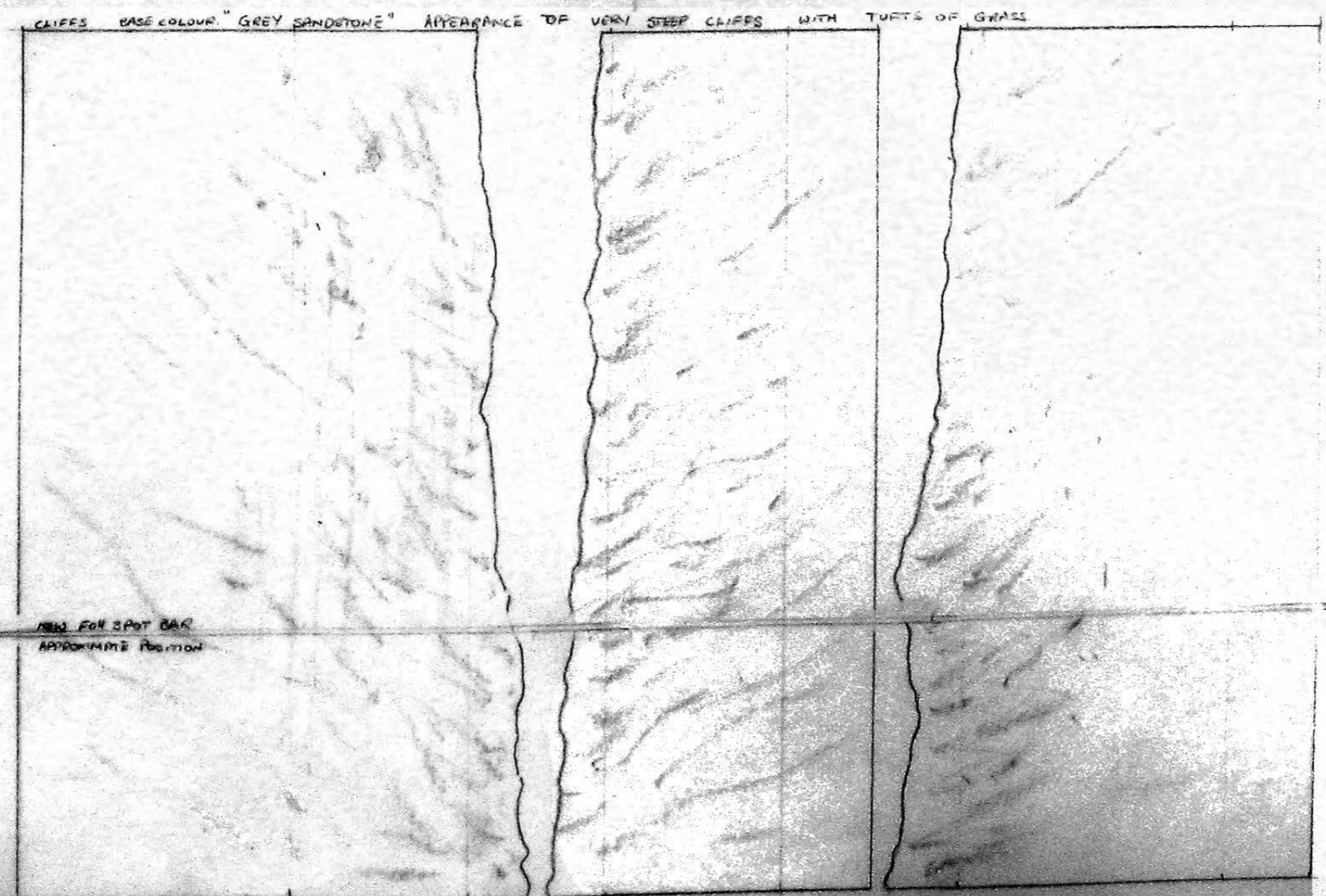


PLANS IN FOR ACT 1 & 2. BASE COLOUR DARK GREY (NOT SHOWN) DARKER THAN CLIFFS
 OBSERVED HORIZONTALLY & VERTICALLY - DIAGONALLY WITH
 STRIKELIGHT CLIFF COLOURS:



PIRATES OF PENZANCE ACT 1

L.C.S. - BOOLEIGH SHERINGTON JULY 1976 & ANDY BATES

SCALE 1:20

STEPS REMOVED DURING PERFORMANCES

* A1

* A16

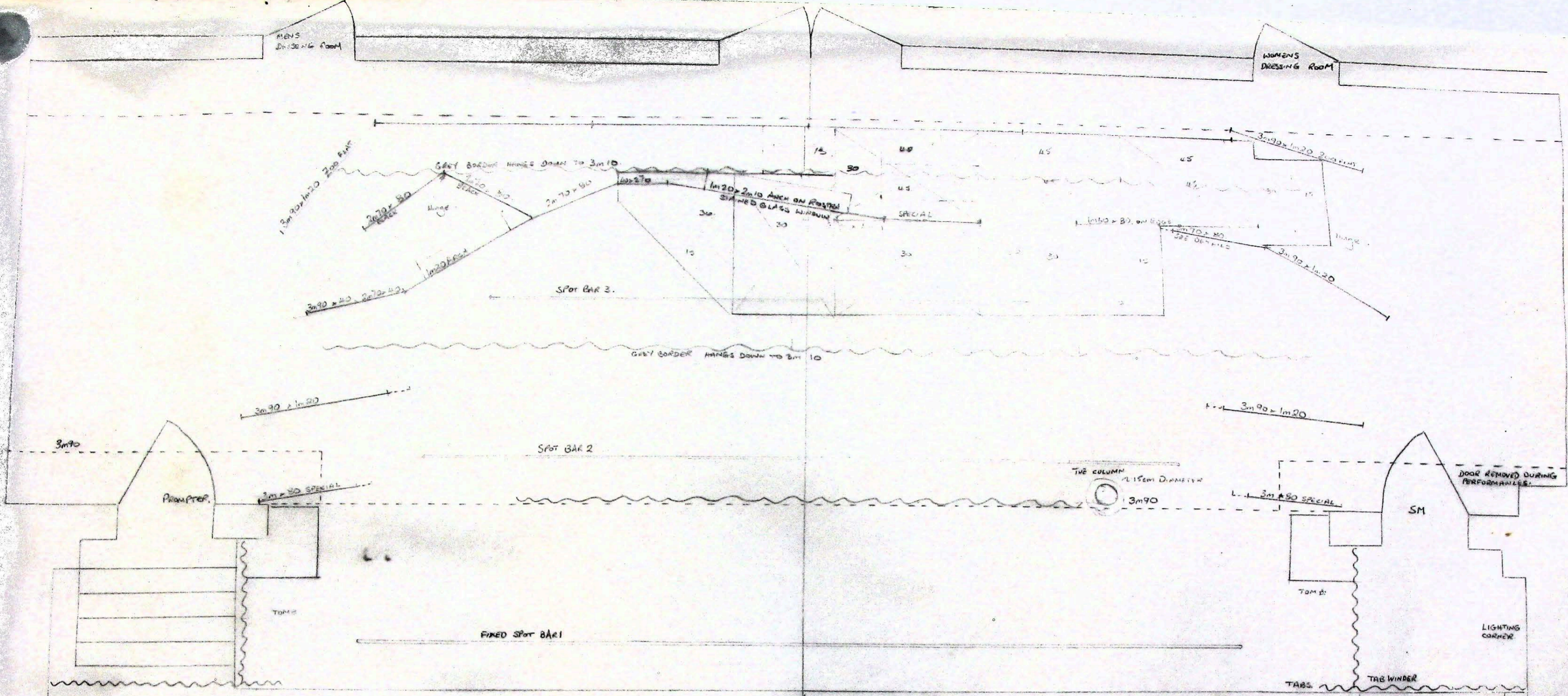
MENS DRESSING ROOM

WOMENS DRESSING ROOM

PIRATES OF PENZANCE ACT 2

1.C.O.S - BODLEIGH SALTERTON JULY 1976 © ANDY POTTER

SCALE 1:20



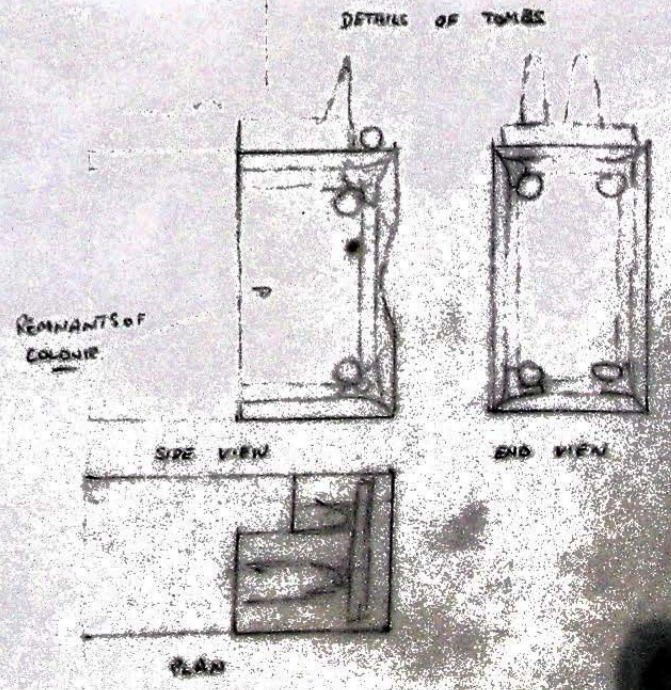
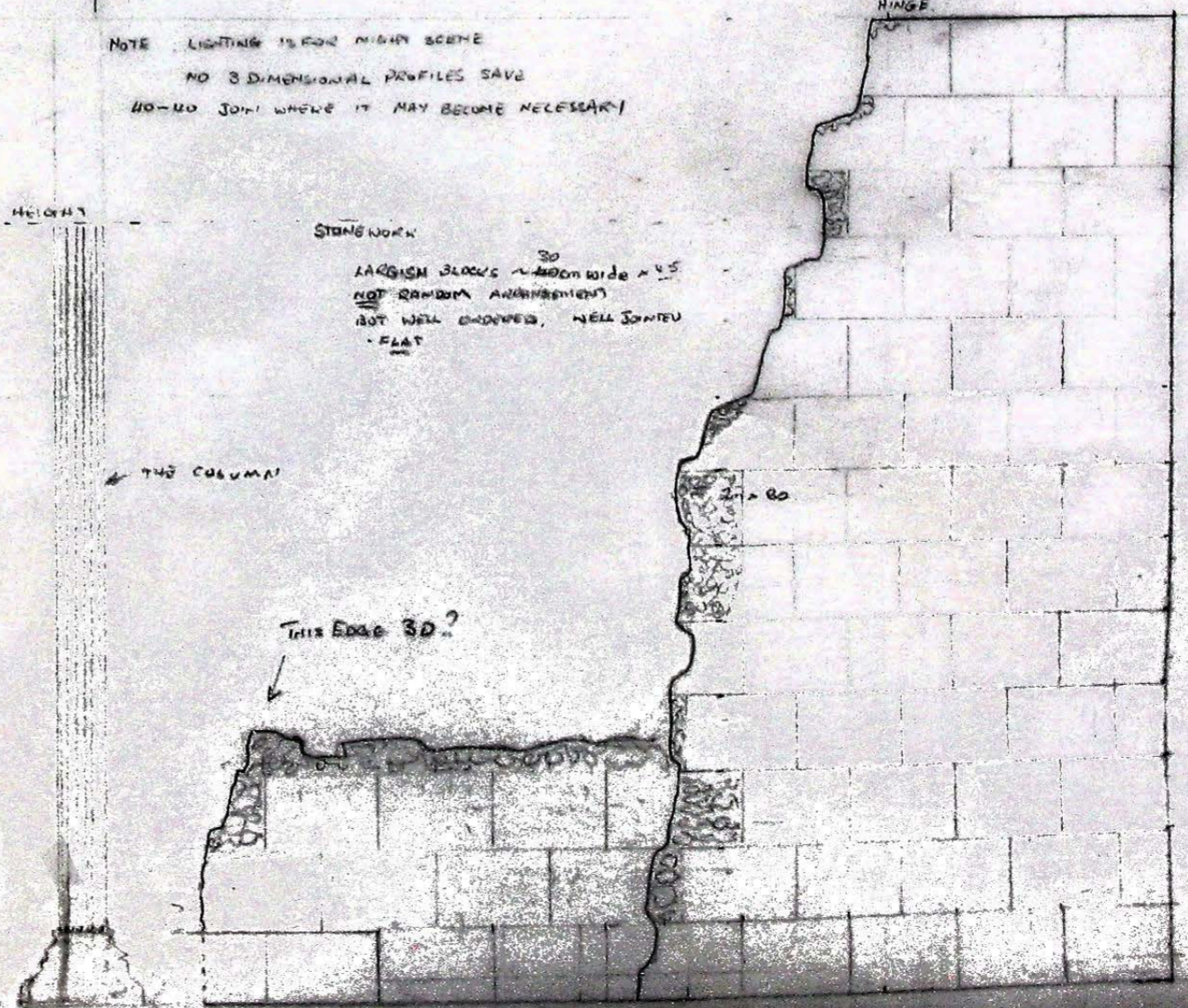
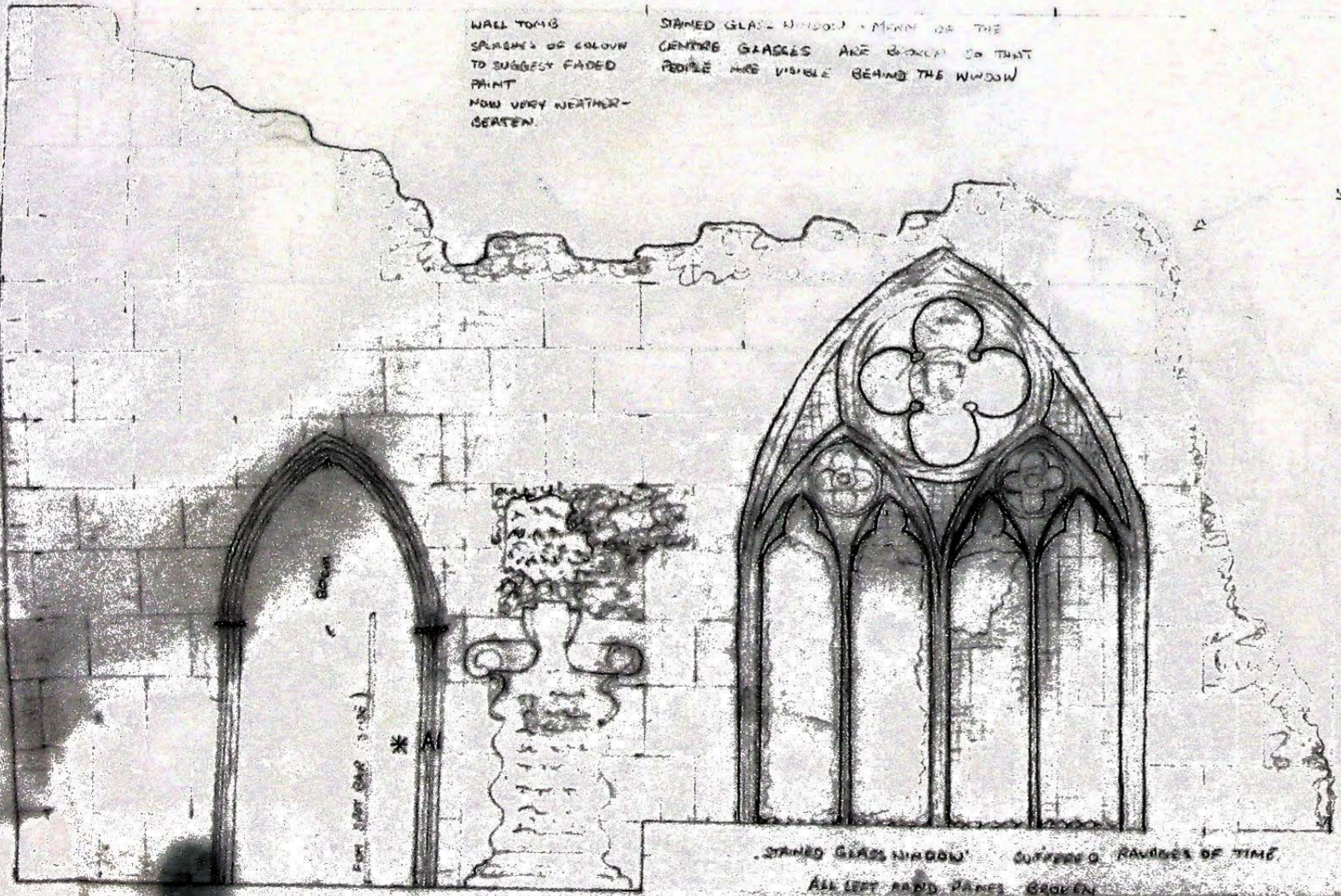
WALL TOMBS
SPARKS OF COLOUR
TO SUGGEST FADED
PAINT
NOW VERY WEATHER-
SCRIBEN.

STAINED GLASS WINDOW - MISSING FOR THE
CENTRE GLAZES ARE BROKEN SO THAT
PEOPLE ARE VISIBLE BEHIND THE WINDOW

NOTE LIGHTING IS FOR NIGHT SCENE
NO 3 DIMENSIONAL PROFILES SAVE
40-40 JOINT WHERE IT MAY BECOME NECESSARY!

STONEMAN
30
LARGISH BLOCKS - 1.40m wide x 4.5
NOT RANDOM ARRANGEMENT
BUT WELL CHIPPED, WELL JOINED
- FLAT

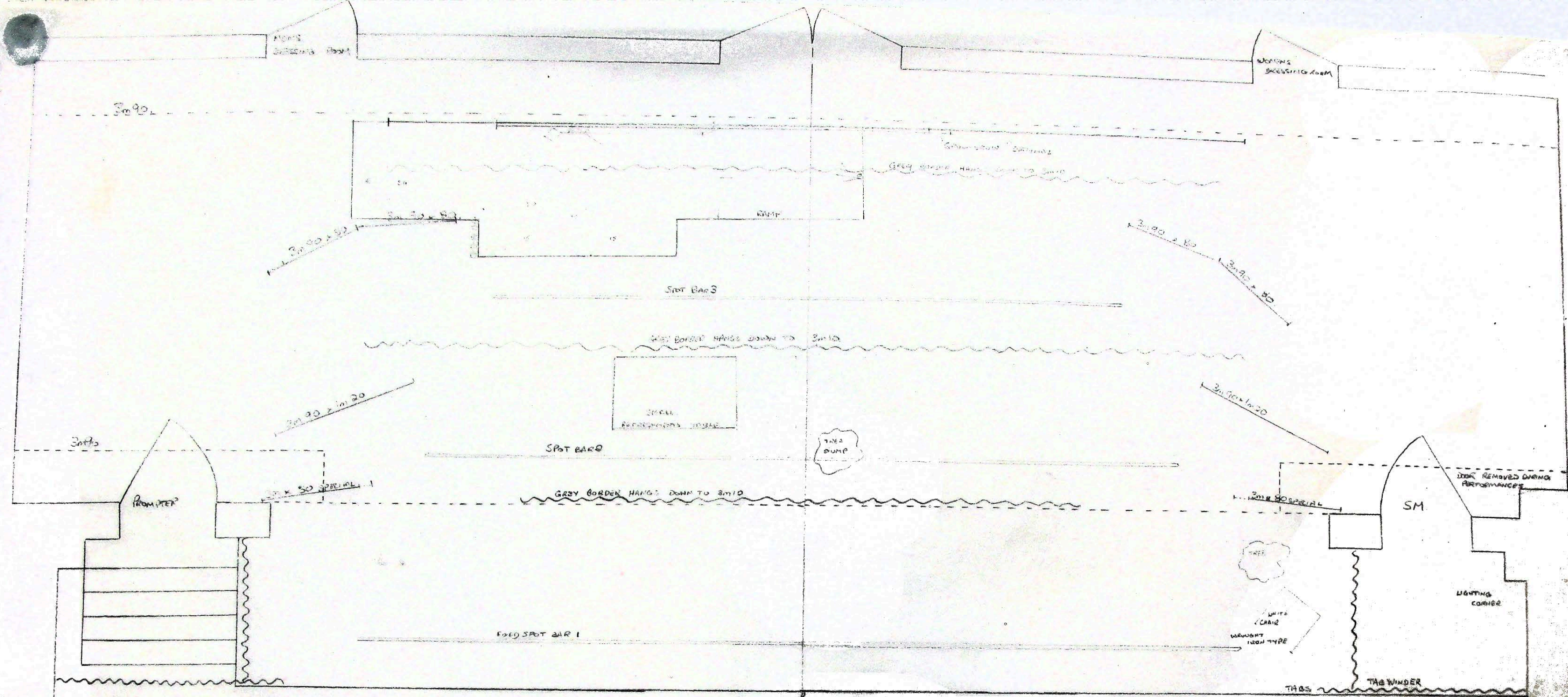
STEPS REMOVED DURING
PERFORMANCES



A16 *

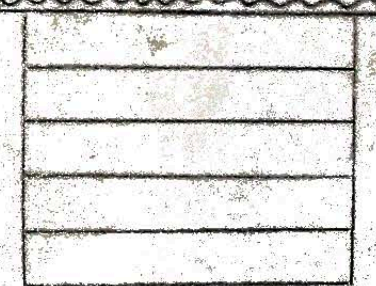
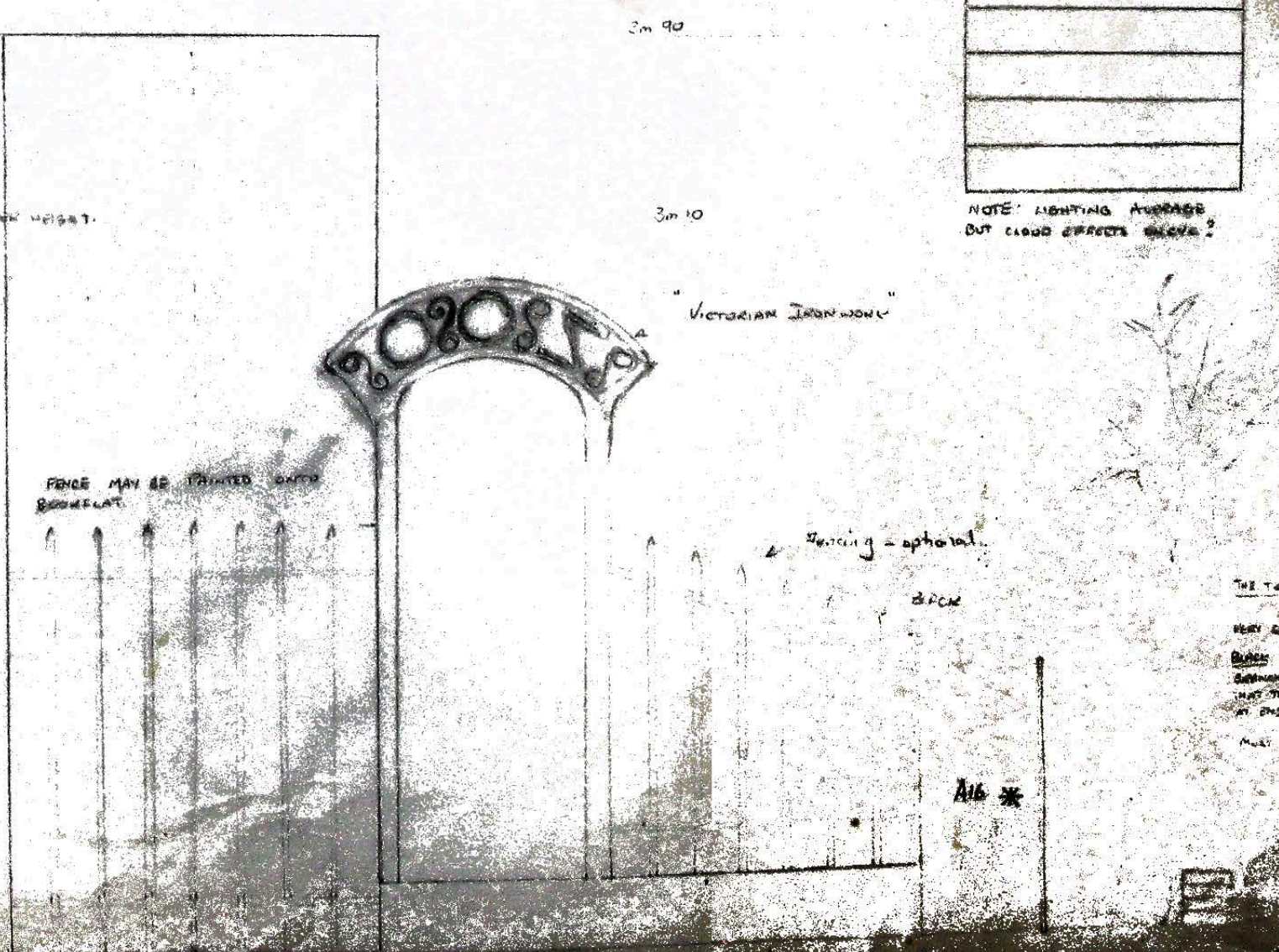
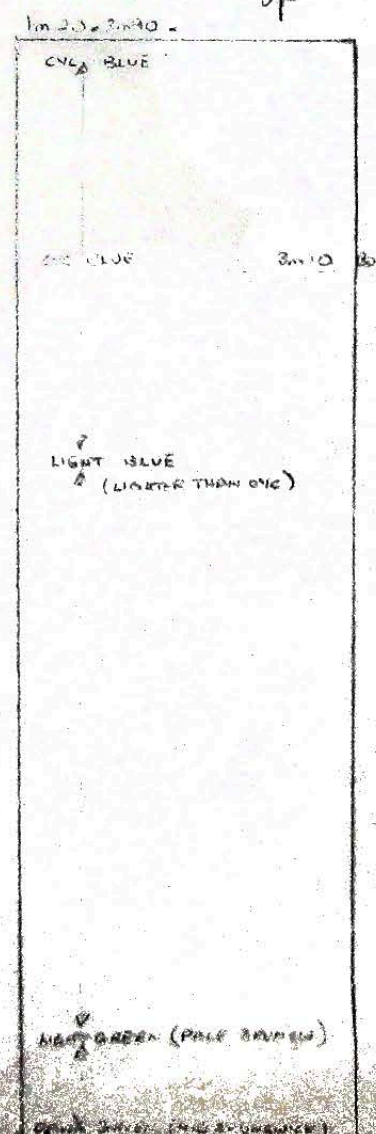
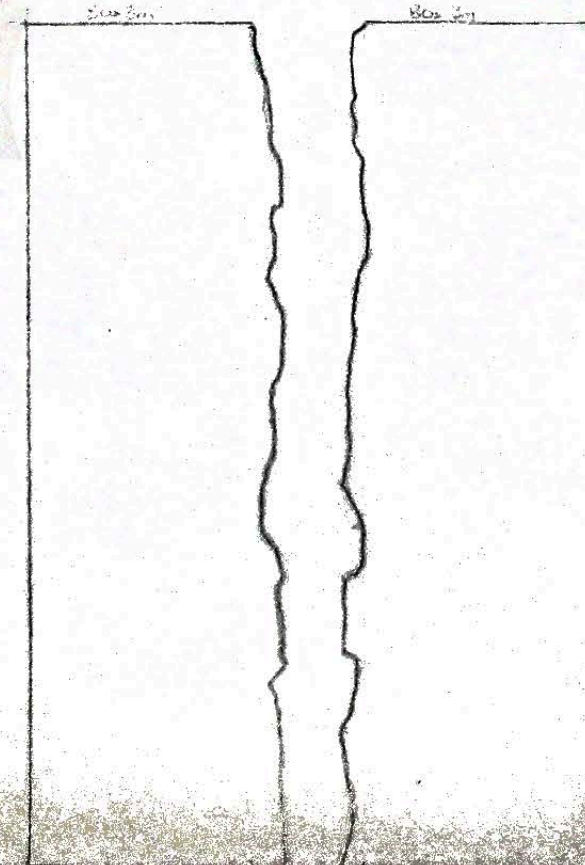
THE ZOO

I.C.O.S. BUBLEIGH SATELTON JULY 1976 - GRADY GARDNER
SCALE 1:20



ALL WING FILMS TO BE PAINTED IN COLOUR SCHEME SHOWN NIGHT
SAVE FOR GREENS (AND CYC) BELOW

BORDERED FROM FENCE PAINTED BLACK AND
PAINTED TO REPRESENT INTERIOR OF BUILDINGS



NOTE: LIGHTING AVAILABILITY
BUT CLOUD EFFECTS ABOVE?

THE TEE
NOT ONLY VISIBLY TWO DIRECTIONS
BUT ALSO VISIBLY
SOMEONE ELSE AT THE
THAT THEY CAN SEE
AT THE
MUST NOT BE IN THE

* A1

A16 *